



Rear Skid Plate Kit

Part Number: SP-102

Tesla 2017-2023 Model 3

Tesla 2020-2023 Model Y

Installation Instructions

For technical inquiries please email us at tech@hpsperformance.com

In the email, please include the following information for faster response:

- Year / Make / Model / Motor of your vehicle.
- If it is a fitment issue, please include pictures showing the fitment problem.
- If there are missing parts, please list the part number(s) from the bill of materials on the 2nd page.
- Optional but recommended – Your contact phone number and preferred call back time.

You can also give us a call via 626-747-9200 for tech support Monday-Friday, 9:00am-5:00pm Pacific Time.

Bill of Materials

Kit Number: SP-102

Line #	Description	Part Number	Qty
1	Skid Plate	RSP-0002	1
2	Bracket, "L"	530-618	2
3	Threaded Coupler, Male to Female	530-941	2
4	Hex Drive Screw Stainless Steel, M6 x 1 mm Thread, 15mm Long	92095A128	4
5	Hex Drive Screw Stainless Steel, M6 x 1 mm Thread, 20mm Long	92095A240	2
6	Hex Drive Screw Stainless Steel, M6 x 1 mm Thread, 35mm Long	92095A246	10
7	Aluminum Spacer, 13 mm OD, 5 mm Long, for M6 Screw Size	94669A165	4
8	Aluminum Spacer, 13 mm OD, 10 mm Long, for M6 Screw Size	94669A175	2
9	Aluminum Spacer, 13 mm OD, 15 mm Long, for M6 Screw Size	94669A351	2
10	Aluminum Spacer, 13 mm OD, 20 mm Long, for M6 Screw Size	94669A190	2
11	Round Push Nut, for M6 Screw Size, 17 mm OD	94813A300	10
12	Split Lock Washer, M6	92148A180	10
13	Flat Washer, M6, 16mm OD	HW-FW6L	18
14	Metal-Bonded Sealing Washer, M6	94709A214	10
15	Nylock Nut, M6	607512	4
16	Vinyl Foam Strip Adhesive-Back, Black, 1" Wide, 1/8" Thick	8512K65	40 inches
17	Liquid Thread Locker, Blue	THREAD LOCK	1

- **Verify the contents of this skid plate kit before beginning.**
 - o **DO NOT INSTALL IF ANY PARTS ARE MISSING OR DAMAGED.**
 - o **CONTACT tech@hpsperformance.com IMMEDIATELY.**
 - o **WE ARE NOT RESPONSIBLE FOR ANY DAMAGE CAUSED DUE TO IMPROPER INSTALLATION.**
- **Installation requires moderate mechanical skills. A qualified mechanic is highly recommended.**
- **Before installing any parts of this skid plate kit, please READ THE INSTRUCTIONS THOROUGHLY.**
 - o **Intricate details are included in these instructions. Failure to follow the instructions will yield poor results.**
- **For technical inquiries, please email us at tech@hpsperformance.com**

Tools Required

10mm Socket and Ratchet

10mm Wrench

4mm Hex socket

Torque wrench (in-lb)

Scissors

Ruler or Tape Measure

Pliers

Flathead Screwdriver

Isopropyl Alcohol

PLEASE READ THE INSTRUCTIONS CAREFULLY BEFORE STARTING!

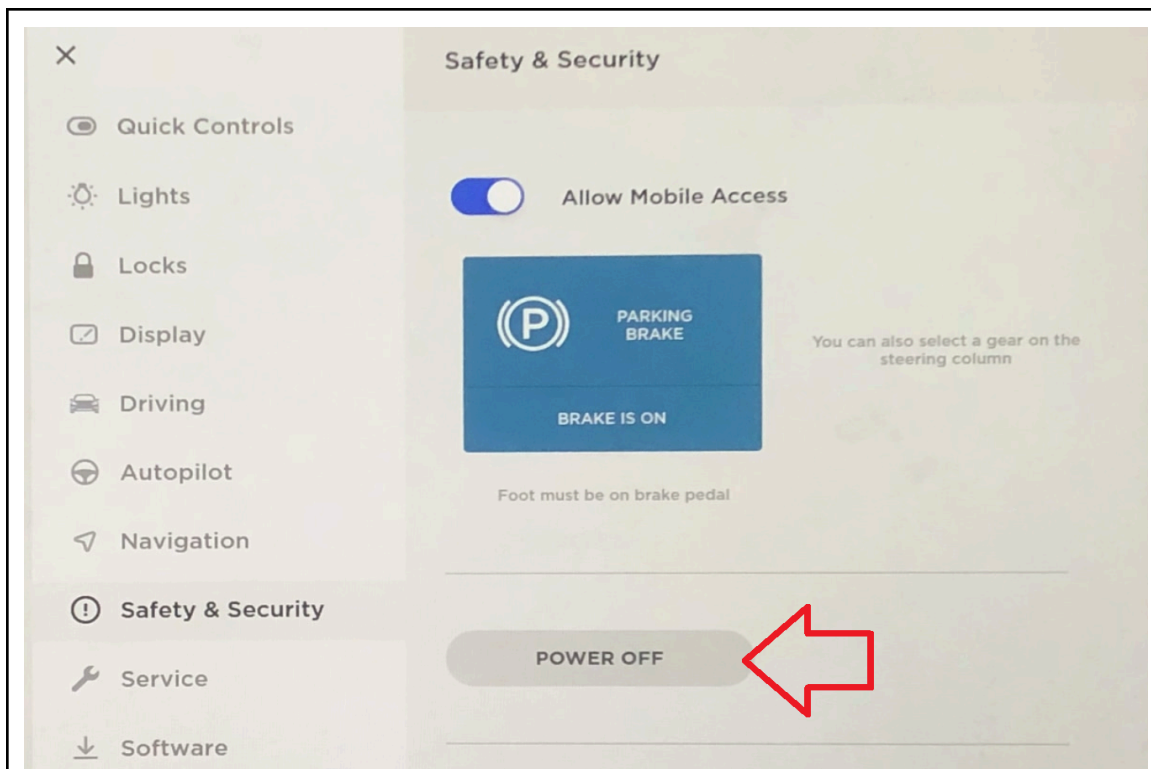
This installation is not for beginners. Install this product with EXTREME caution! Improper installation of this product can damage vital components of the vehicle! If you are not mechanically inclined, please have a professional automotive technician install this kit.

NOTE: HPS holds no responsibility for any damage that results from misuse of this product.

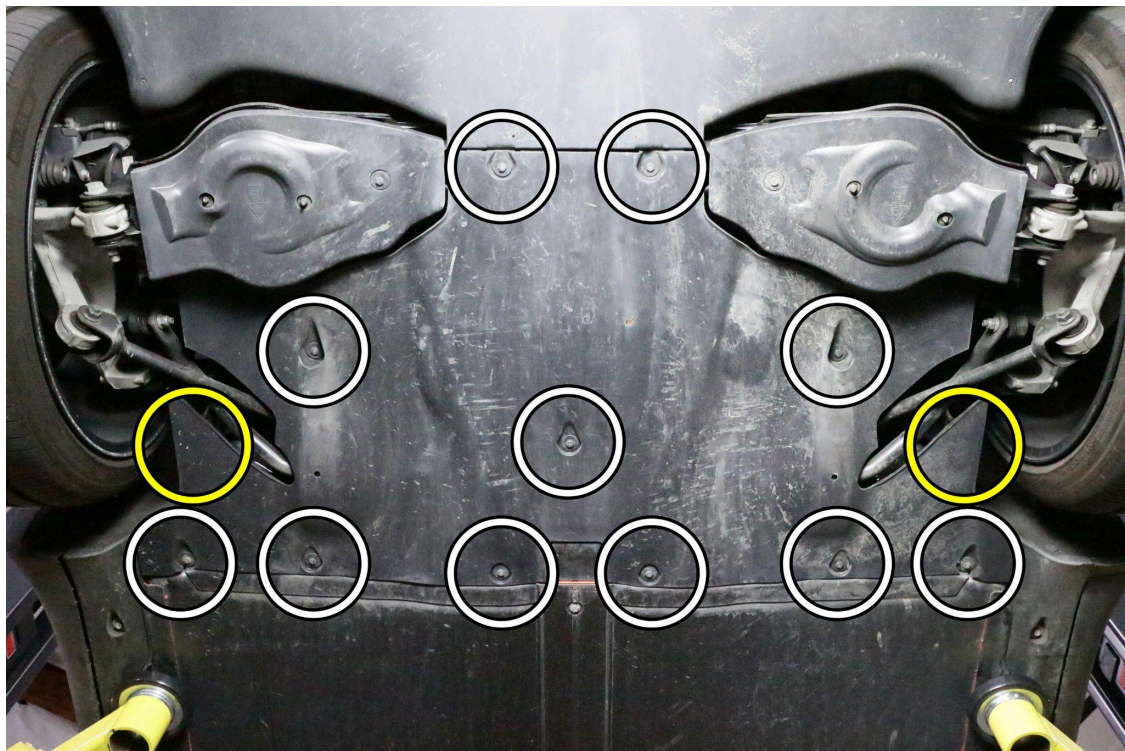
GETTING STARTED



1. To install this skid plate, you will need to access the rear underside of the vehicle. Be sure to follow Tesla's lifting procedures to prevent damaging the battery and take extra precautions whenever working underneath the vehicle.



2. Power off the vehicle through the touch screen by tapping "Menu" > "Safety and Security" > "POWER OFF".



3. Using a 10mm socket, remove the bolts holding the rear undertray to the vehicle. Depending on the year and model, there are a total of either 11 or 13 bolts.



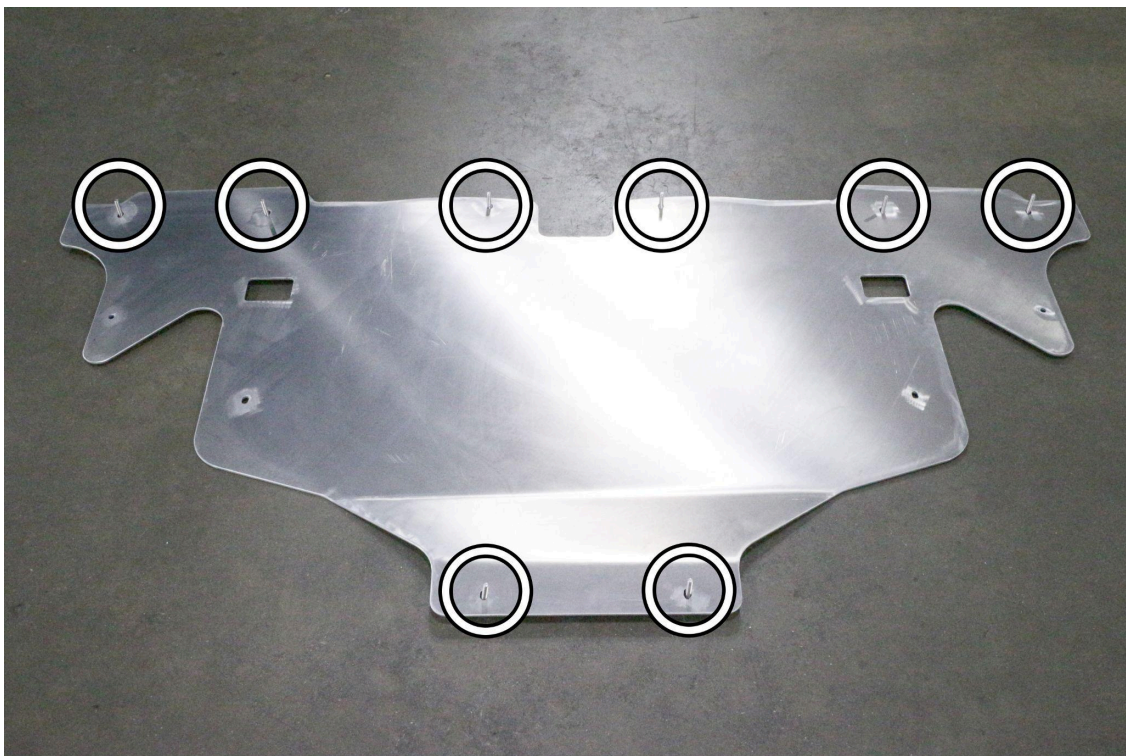
4. If your vehicle only had 11 bolts securing the undertray, you will need to locate one clip on each side of the vehicle securing the wheel well liner to the undertray. Once the clips have been removed, the undertray can be removed from the vehicle.



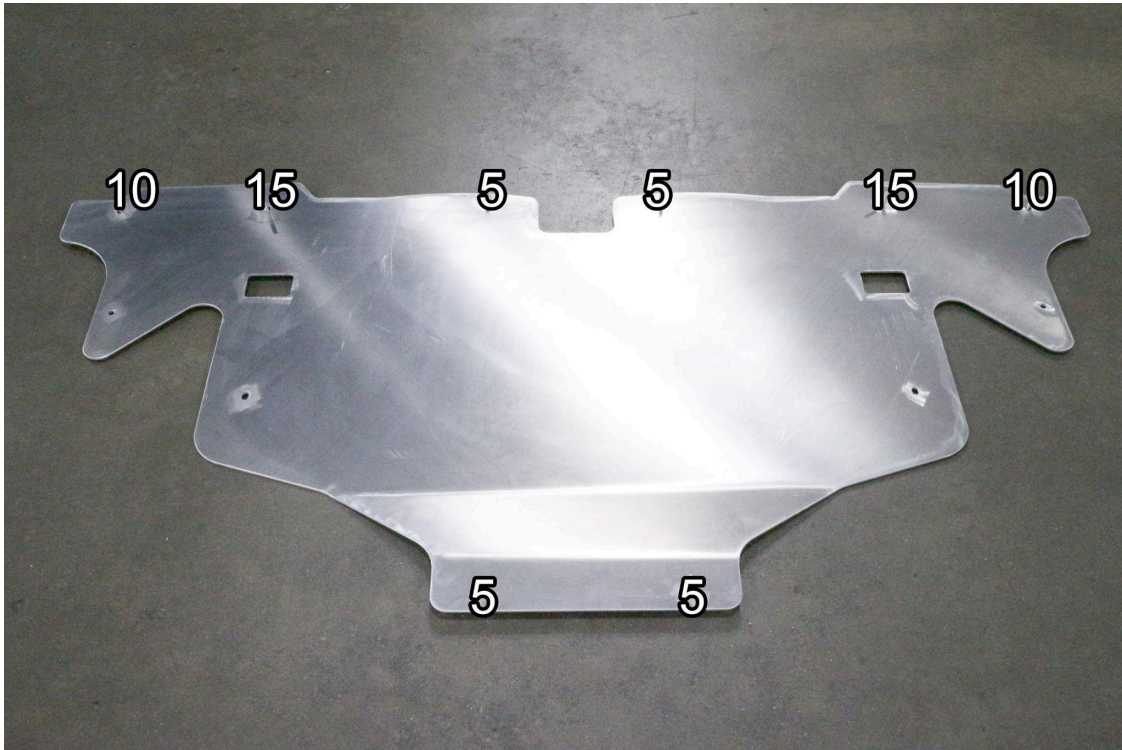
5. Apply 1-2 drops of the provided threadlocker onto the male end of the two provided threaded couplers. Install one onto each of the factory undertray mounting locations located just rear of the sway bar brackets. Once they are fully threaded on, use pliers to apply leverage to ensure the couplers are fully secured.



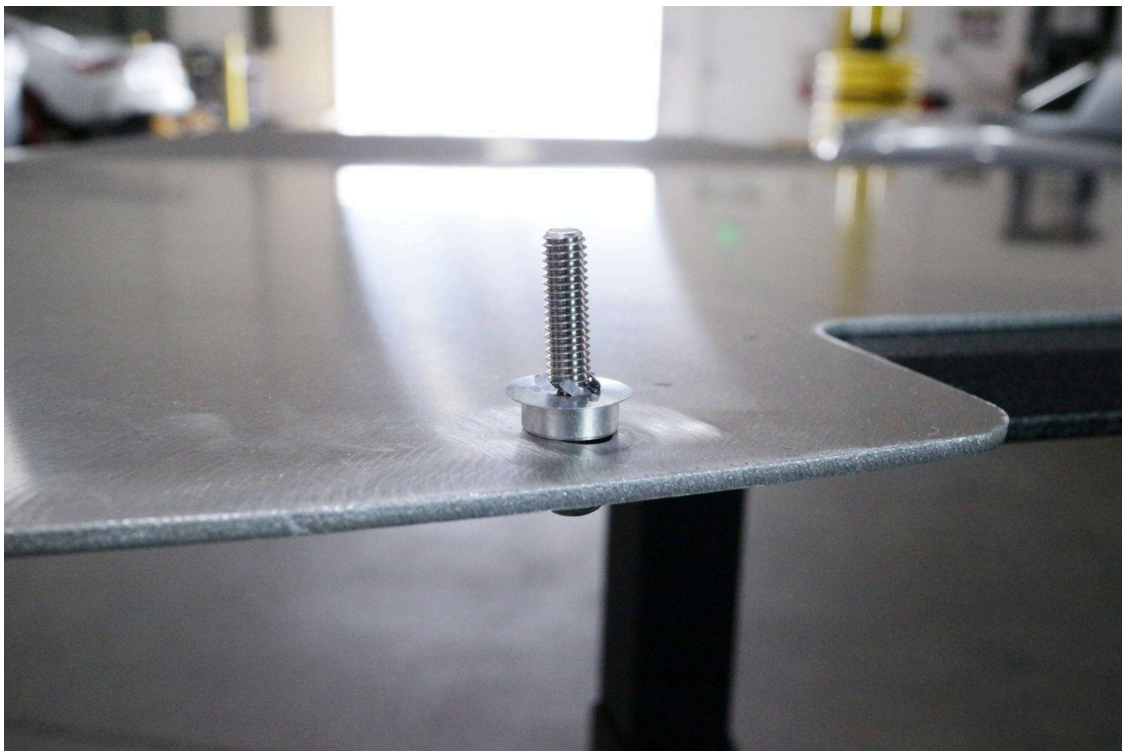
6. Using the image above for reference, slide a split lock washer onto a 35mm long bolt, then the metal/rubber washer with the rubber side facing out. Next, slide an M6 flat washer onto the bolt. Assemble a total of 8 sets.



7. Place a piece of cardboard or a moving blanket large enough to fit the skid plate. Lay the skid plate flat with the logo side facing down. Insert the eight assembled bolts through the mounting points indicated above.



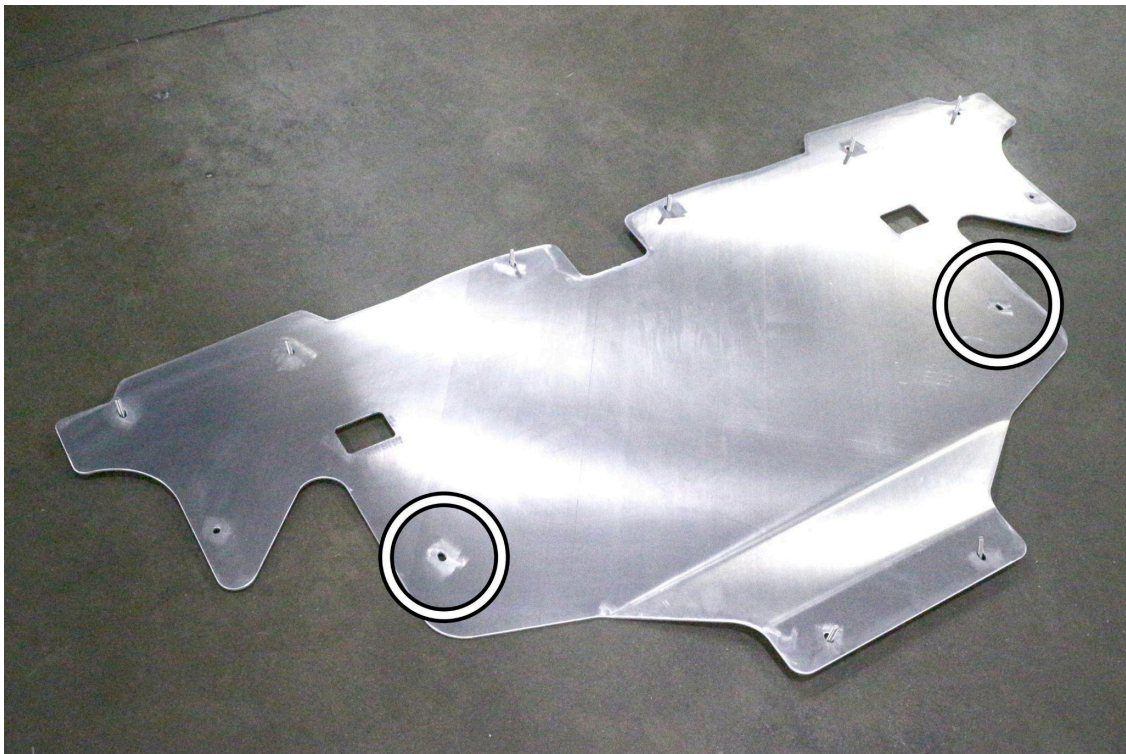
8. Slide the provided spacers onto the bolts. The numbers on the image indicate the thickness of the spacers in millimeters.



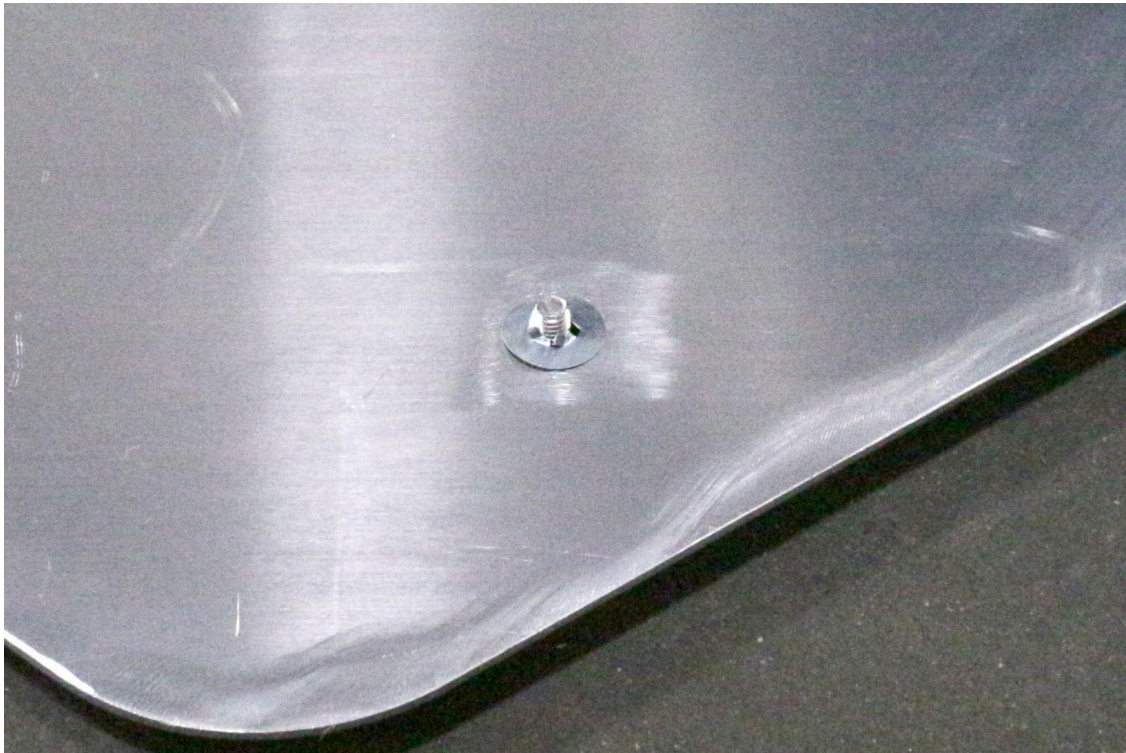
9. Once the spacers are in place, install a round push nut onto each bolt to capture the hardware to the skid plate.



10. Using the image above for reference, slide a split lock washer onto a 20mm long bolt, then the metal/rubber washer with the rubber side facing out. Next, slide an M6 flat washer onto the bolt. Repeat for both 20mm long bolts.



11. Insert the two assembled 20mm long bolts into the two holes indicated above, in the same orientation as the previously installed bolts.

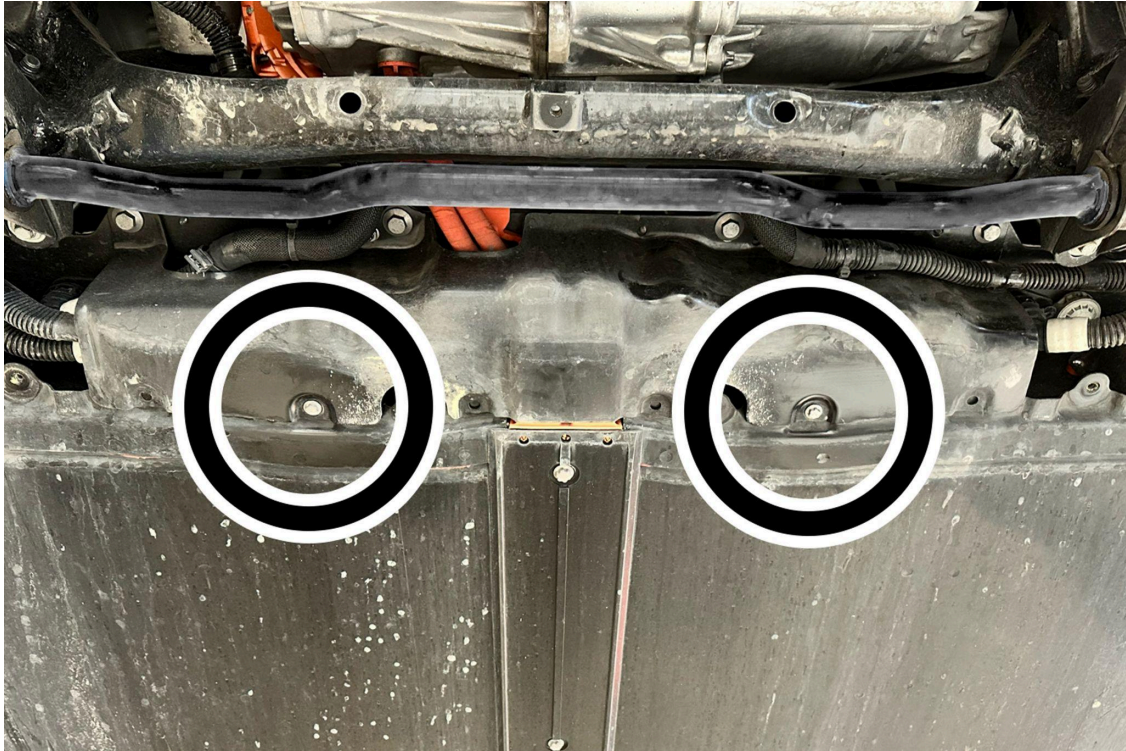


12. Install a round push nut onto each of the two 20mm bolts to capture it onto the skid plate.

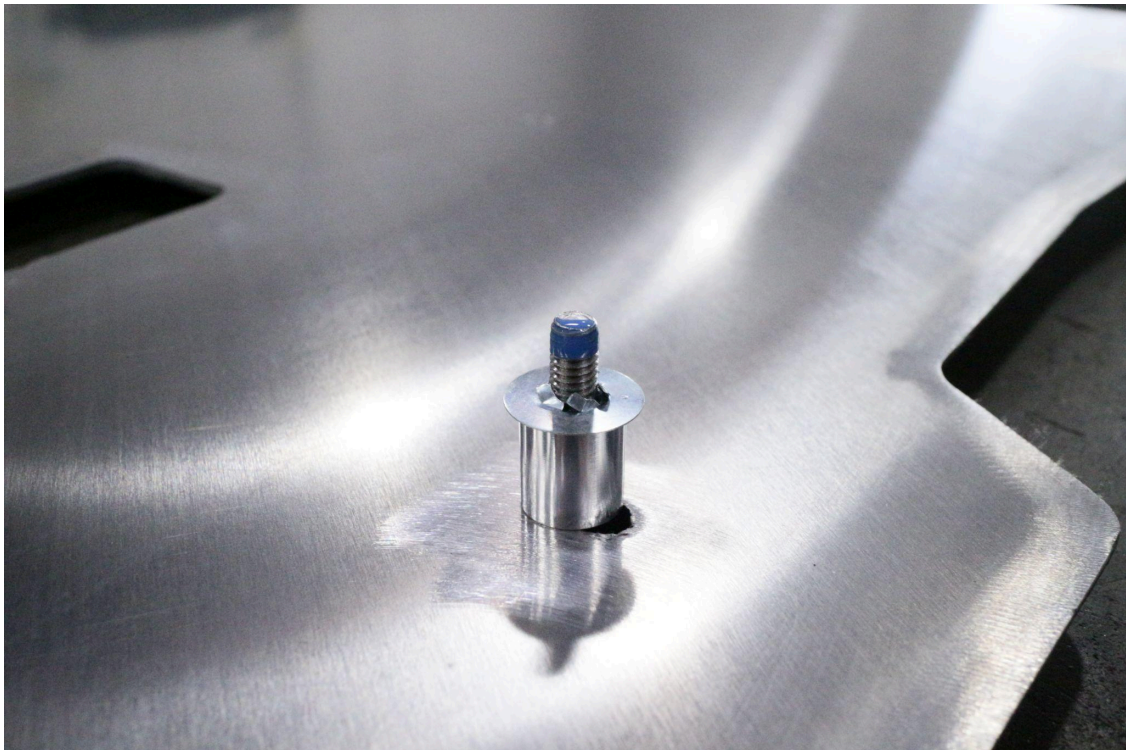


13. Cut the provided vinyl foam strip into the exact lengths shown on the image. The number indicates the length in inches. Use isopropyl alcohol to clean the areas on the skid plate where the vinyl foam strips will be installed. Apply the vinyl foam strips as shown. Stay within $\frac{1}{8}$ " or 3mm from the edge of the skid plate.

IMPORTANT: DO NOT DISCARD THE REMAINING VINYL FOAM STRIP



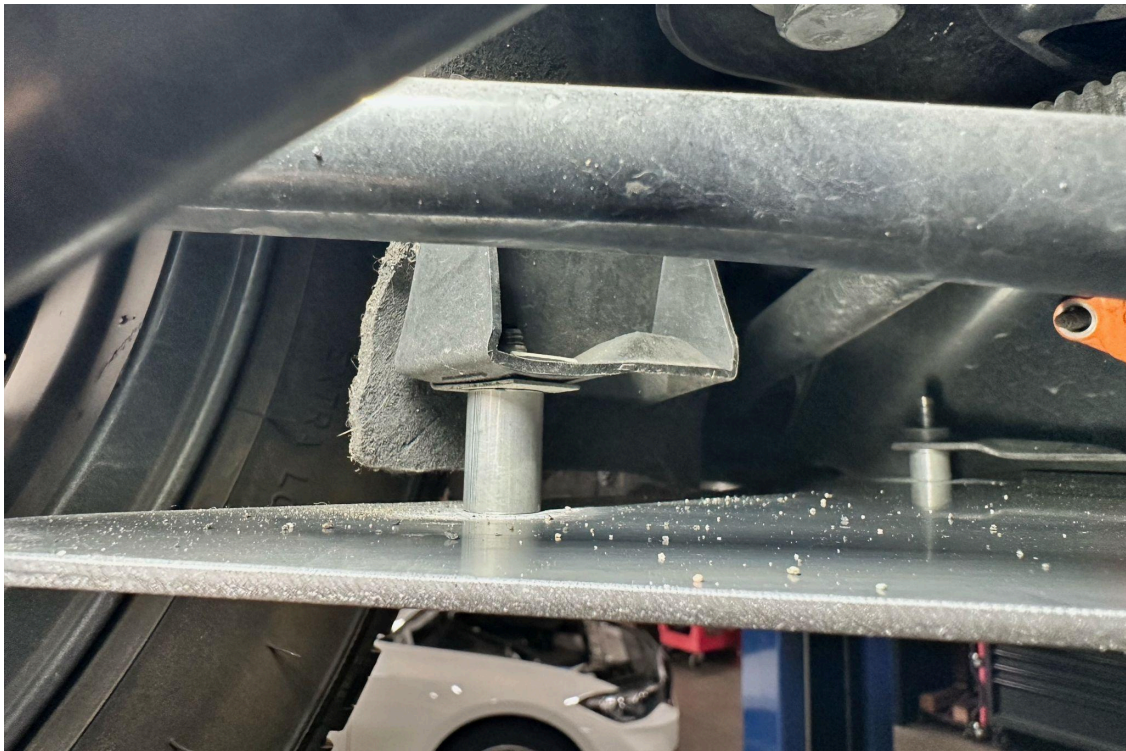
14. Clean the area surrounding the two bolts indicated in the image above. Cut the remaining piece of vinyl foam strip into two separate 2 inch pieces and apply it onto the bolts highlighted in the image.



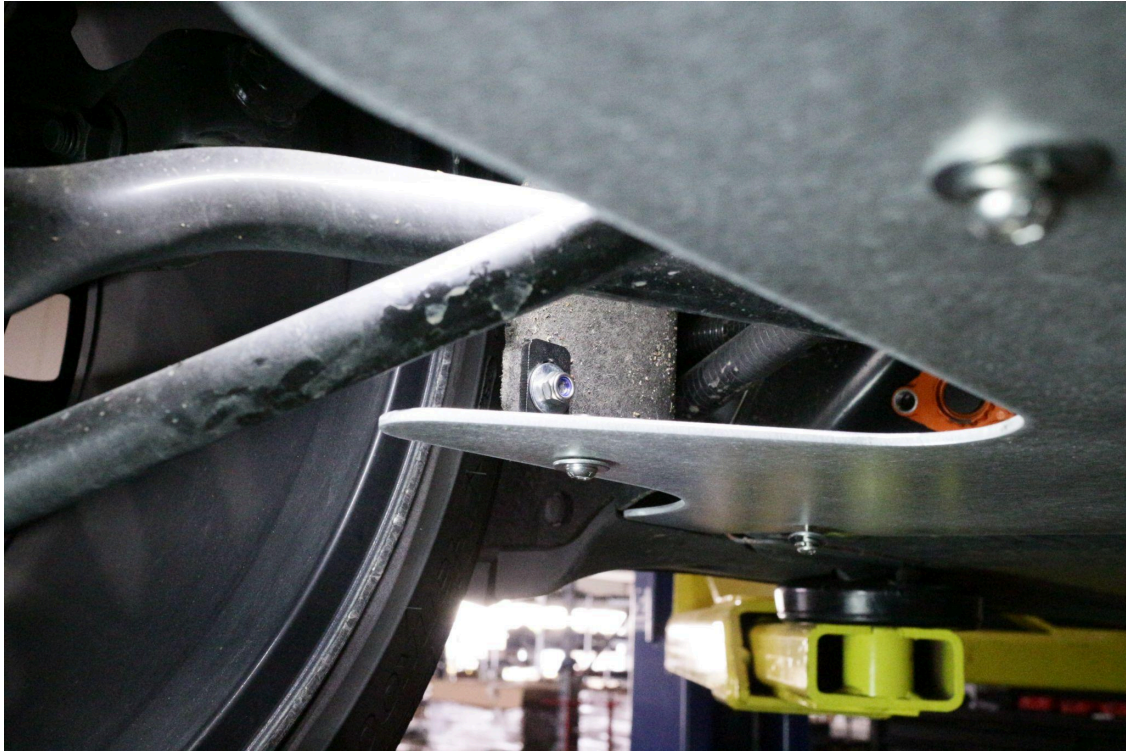
15. Apply 1-2 drops of the provided thread locker to each of the ten bolts.



16. Thread on the bolts in the sequence shown, working in pairs. Leave the bolts loose to allow for adjustability until all of the bolts are threaded.



17A. If your vehicle had bolts securing the wheel well liner to the stock undertray, place a 20mm long spacer onto the top side of one of the remaining holes on the skid plate. Insert one of the provided 35mm long M6 bolts and a flat washer through the skid plate to secure the wheel well liner to the skid plate. Repeat for the opposite side.



17B. If your vehicle had plastic clips securing the wheel well liner to the stock undertray, bolt the long end of the "L" bracket onto the wheel well liner using one of the provided 15mm M6 bolts, two flat washers, and nut. Then, bolt the short end of the "L" bracket to the skid plate using another short M6 bolt, two flat washers, and nut. Repeat for the opposite side.

FINAL STEPS

18. Some of the hardware provided will not be applicable to your vehicle. Some hardware will be left over.
19. Once the skid plate is in place, make sure all the fasteners are secured to **5.5 Nm (4.1 lbs-ft)**.
20. Check for adequate clearance and ensure that no cables, hoses, or lines are pinched.
21. Remove all tools from the vehicle before driving.

Periodically, recheck the alignment of the skid plate and make sure there is proper clearance around and along the plate. Failure to follow proper maintenance procedures may cause damage to the skid plate and will void the warranty.



Also available for:
2017-2023 Tesla Model 3 and 2020-2023 Tesla Model Y



HPS Performance Front Skid Plate

Part Number: [SP-101](#)

**Contact an authorized HPS Performance dealer or
visit us at hpsperformance.com for more details**