



## **Performance Oil Catch Can Kit**

**Part Number: 860-021**

**Toyota 2016-2023 Tacoma 3.5L V6**

## **Installation Instructions**

For technical inquiries please email us at [tech@hpsperformance.com](mailto:tech@hpsperformance.com)

In the email, please include the following information for faster response:

- Year / Make / Model / Engine of your vehicle
- If it is a fitment issue, please include pictures showing the fitment problem
- If there are missing parts, please list the part number(s) from the bill of materials on the 2nd page
- Optional but recommended – Your contact phone number and preferred call back time

You can also give us a call via 626-747-9200 for tech support Monday-Friday, 9:00am-5:00pm Pacific Time.

# Bill of Materials

## Kit Number: 860-021

Line #	Description	Part Number	Qty
1	Oil Catch Can	OCC-14	1
2	Oil Catch Can Bracket	OCC-BRKT-027	1
3	Bolt, M8 x 1.25, 16mm Long	HW-B8-16	2
4	Bolt, M5 x 0.8, 10mm Long	HW-B5-10	3
5	Flat Washer, M8, 16mm OD	HW-FW8S	2
6	Straight Aluminum Adapter, AN-6 to 16mm x 1.50	AN816-6-M1615	2
7	Push-On Aluminum Hose End, AN-6, 90 Degree	150-9006	2
8	150 Series Push-On Hose, AN-6	150-06	22 inches
9	150 Series Push-On Hose, AN-6	150-06	35 inches

- **Before installing any parts of this oil catch can kit, please read the instructions thoroughly.**
- **Verify the contents of this oil catch can kit before disassembling your vehicle.**
- **Report any defective or missing parts to HPS directly. The HPS dealer you purchased this product from might not have the replacement parts you need.**
- **Installation requires moderate mechanical skills. A qualified mechanic is highly recommended.**
- **Do not attempt to install the oil catch can kit while the engine is hot.**
- **This installation may require the removal of coolant lines that may be hot.**
- **For technical inquiries, please email us at [tech@hpsperformance.com](mailto:tech@hpsperformance.com)**

## **PLEASE READ CAREFULLY BEFORE INSTALLATION!**

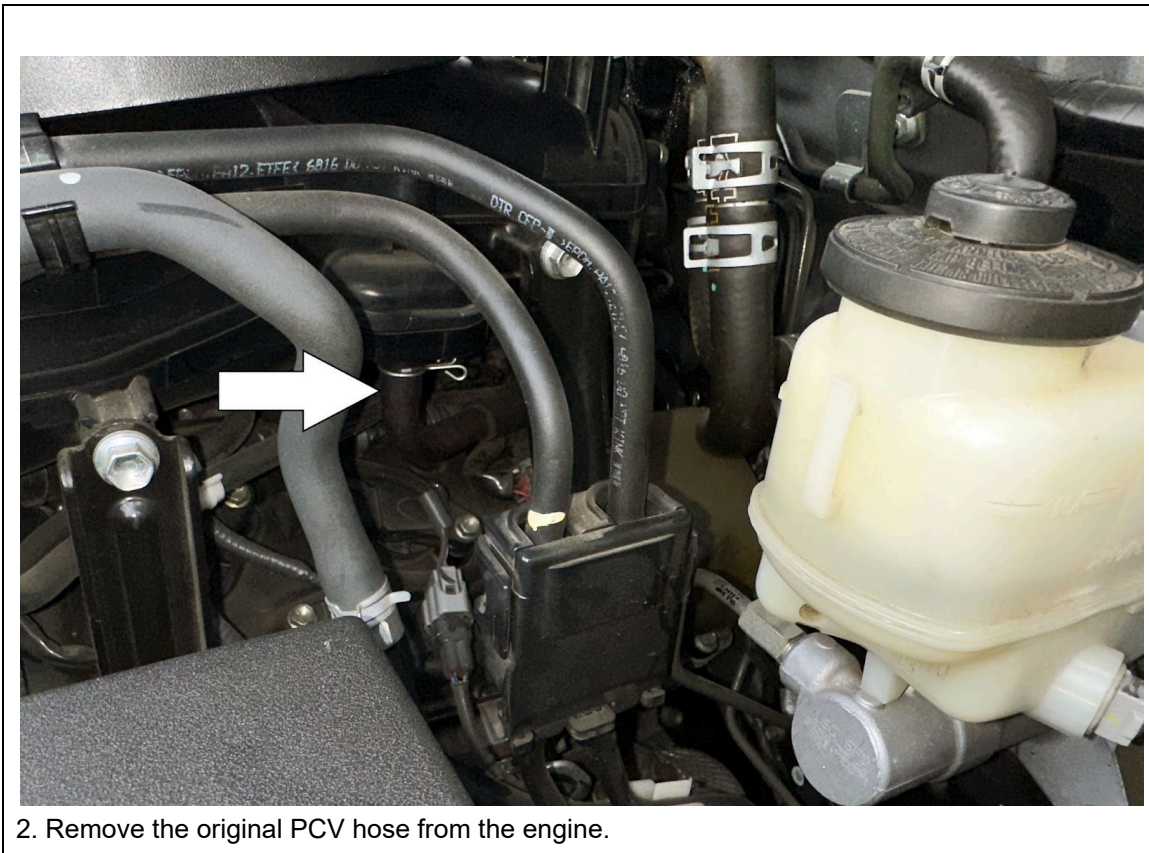
This installation is not for the novice customer. Install this product with EXTREME caution! Misuse of this product can destroy your engine! If you are not mechanically inclined, please have a professional automotive mechanic install this kit.

**NOTE: HPS holds no responsibility for any engine damage that results from misuse of this product.**

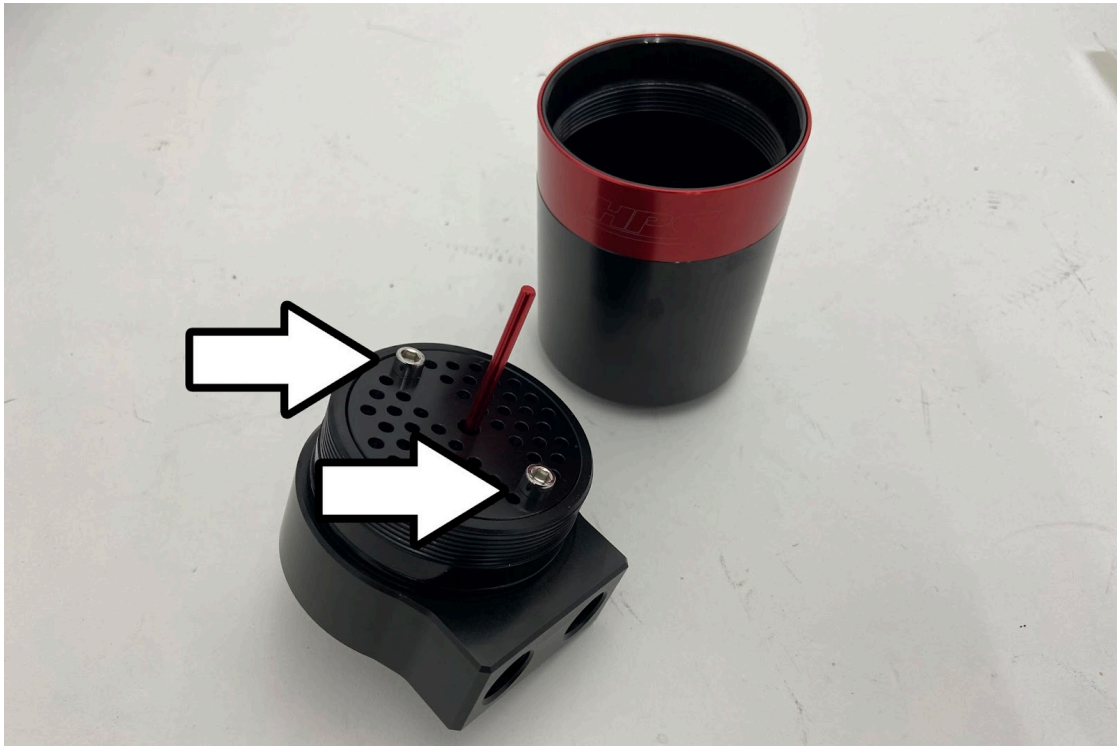
### **GETTING STARTED**

1. Turn the ignition OFF and disconnect the vehicle's negative battery cable. If the engine has run within the past two hours let it cool down.

NOTE: Disconnecting the negative battery cable erases pre-programmed electronic memories. Write down all memory settings before disconnecting the negative battery cable. Some radios will require an anti-theft code to be entered after the battery is reconnected. The anti-theft code is typically supplied with your owner's manual. In the event your vehicle's anti-theft code cannot be recovered, contact an authorized dealership to obtain your vehicle's anti-theft code. We also highly recommend NOT discarding any stock parts after the installation.



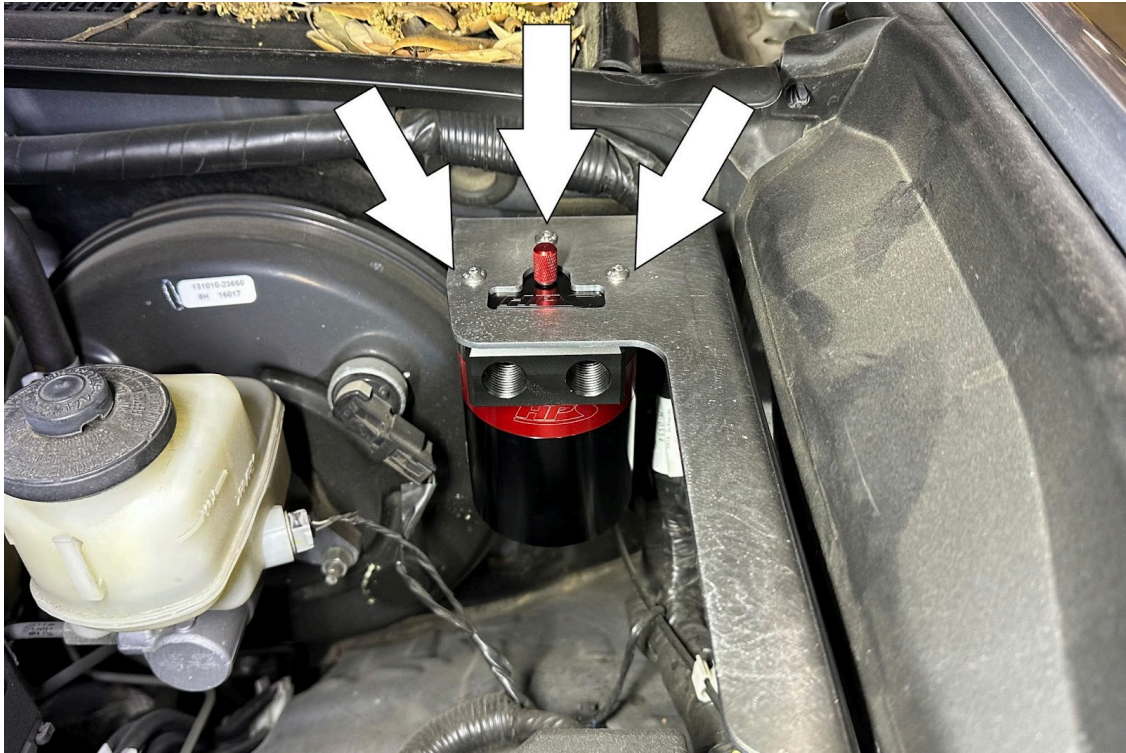
2. Remove the original PCV hose from the engine.



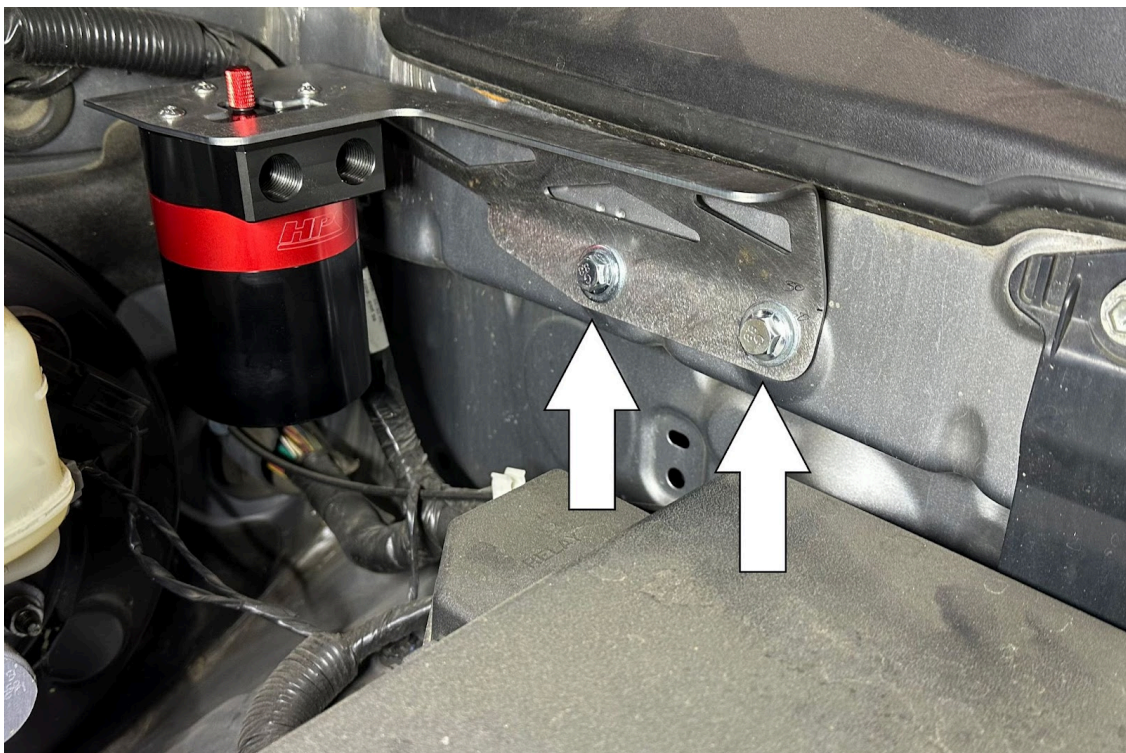
3. Unscrew the top of the HPS Oil Catch Can and check that the Allen bolts are tight.



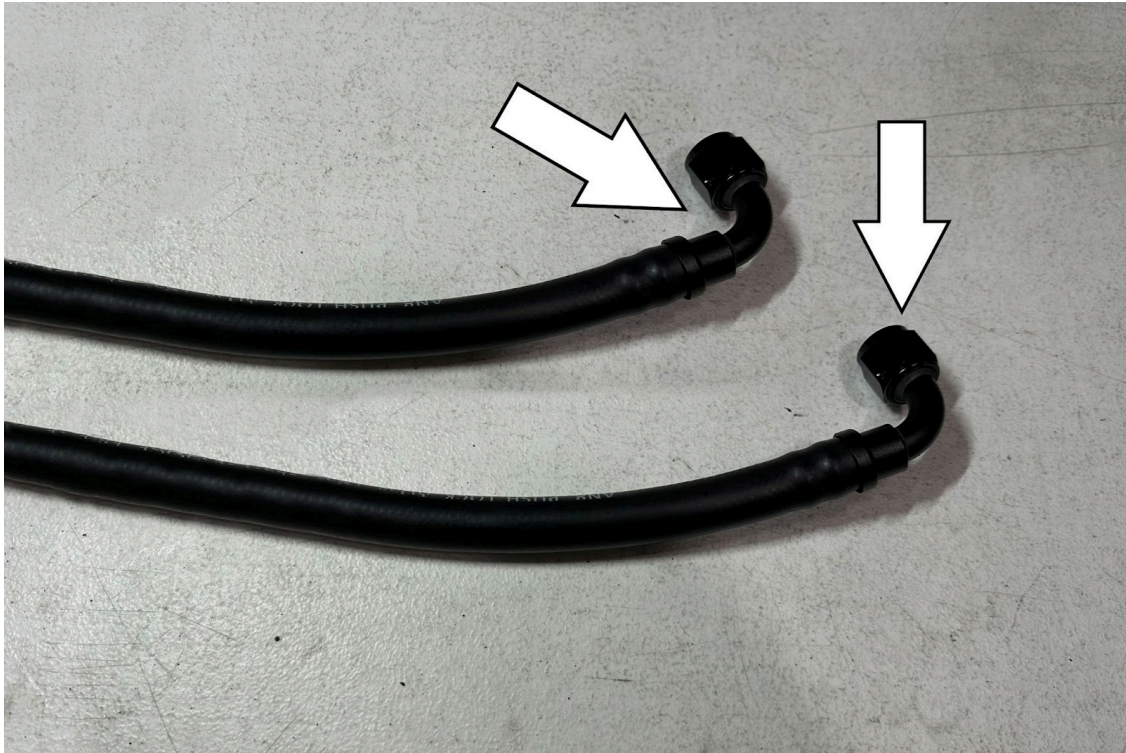
4. Install the provided crush washers onto the metric side of the provided AN to M16 adapter fittings. Then fasten the adapters securely onto the oil catch can.



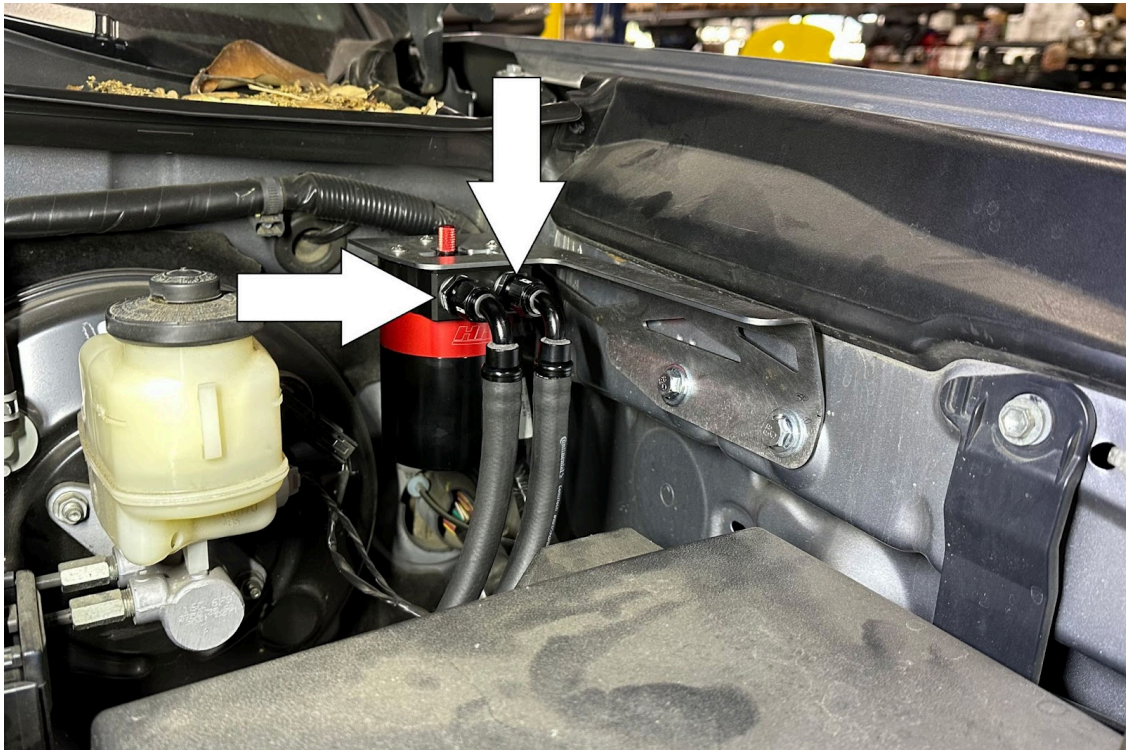
5. Install the oil catch can to the HPS oil catch can bracket using the provided three M5 bolts.



6. Install oil catch can with bracket to the drivers inner fender using the provided M8 bolts and washers.



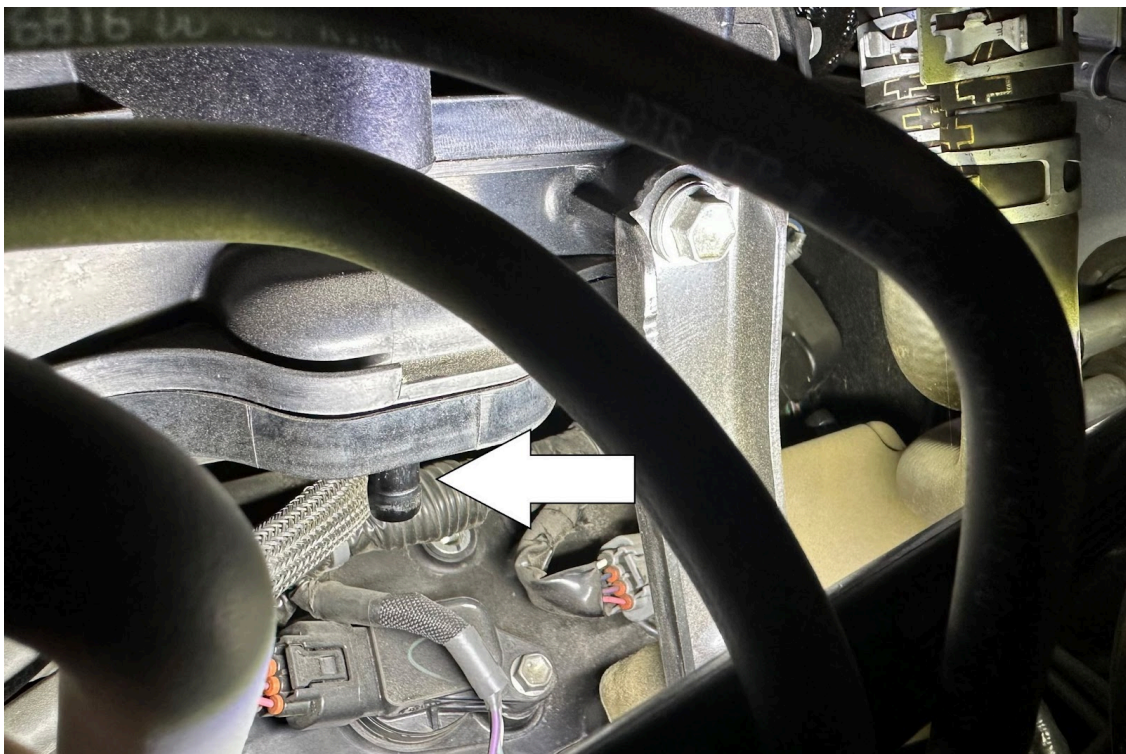
7. Install a AN-6 90 degree hose end fitting onto one end of each of the provided hoses.



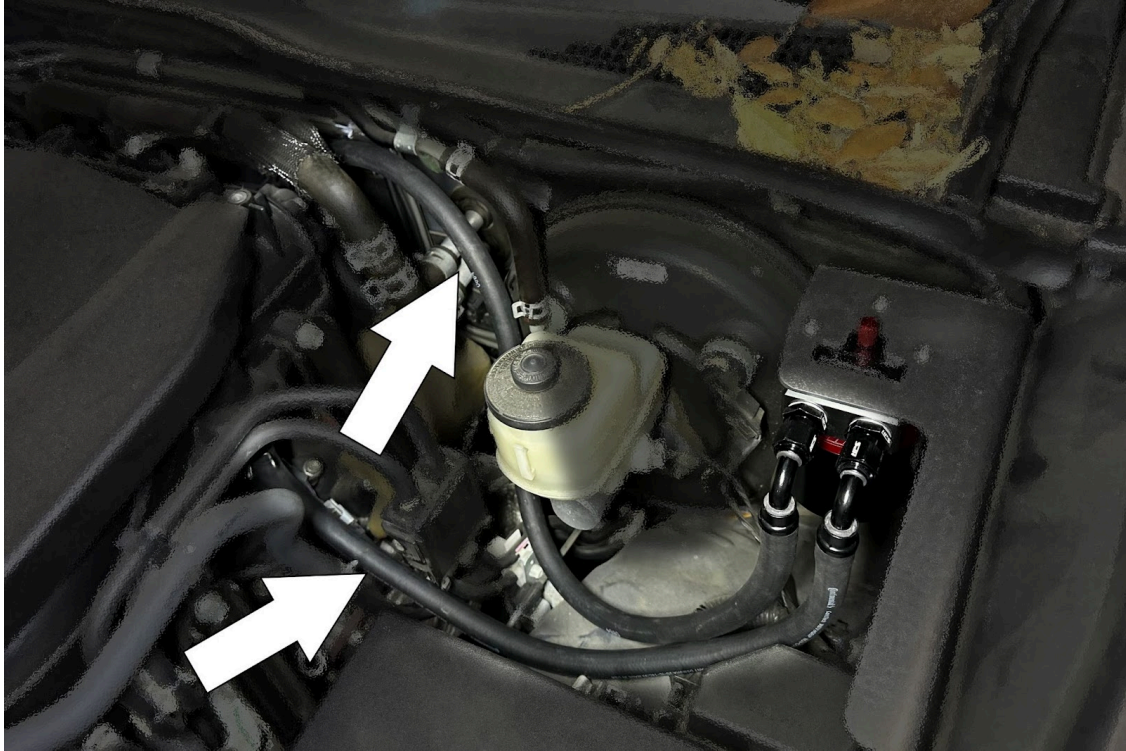
8. Fasten the longer hose to the adapter closest to the inner fender. Next, fasten the shorter hose to the adapter closest to the brake master cylinder.



9. Install the opposite end of the shorter AN hose onto the PCV barb.



10. Press the opposite end of the longer AN hose onto the barb on the intake manifold indicated in the picture above.



11. Route the hoses as shown in the picture above.

## **FINAL STEPS**

Upon completion of the installation, reconnect the negative battery terminal before you start the engine. Double check to make sure everything is tight and properly positioned before starting the vehicle.

Start the engine. Let the car idle for 3 minutes. Perform a final inspection before driving. Listen carefully for any odd noises or rattles prior to taking it for a test drive. If any problems arise, go back and check the hoses and clamps that may be causing the issue and correct the problem.

Ensure that the dipstick on the HPS oil catch can is fully seated. Failure to install the dipstick properly will result in a check engine light and poor performance.



**Also available for:  
Toyota 2016-2023 Tacoma 3.5L V6**



**HPS Silicone Air Intake Kit**  
Part Number [57-1600](#)



**HPS Performance Air Intake Kit**  
Part Number [827-595](#)



**HPS Silicone Radiator + Heater Hose Kit**  
Part Number [57-1581](#)



**HPS Stainless Steel Magnetic Oil Drain Plug**  
Part Number [MDP-M12x125](#)

Contact an authorized HPS Performance dealer or  
visit us at [hpsperformance.com](https://www.hpsperformance.com) for more details