



Performance Shortram Air Intake Kit

Part Number: 827-663

**1995-1999 Toyota Tacoma 2.4L/2.7L
1995-1999 Toyota 4Runner 2.7L**

Installation Instructions

For technical inquiries please email us at tech@hpsperformanceproducts.com

In the email, please include the following information for faster response:

- Year / Make / Model / Engine of your vehicle.
- If it is a fitment issue, please include pictures showing the fitment problem.
- If there are missing parts, please list the part number(s) from the bill of materials on the 2nd page.
- Optional but recommended – Your contact phone number and preferred call back time.

You can also give us a call via 626-747-9200 for tech support Monday-Friday, 9:00am-5:00pm Pacific Time.

Bill of Materials

Kit Number: 827-663

Description	Prep	Part Number	Qty	Check
Air Intake Pipe	1	529-448	1	
HPS Air Filter	2	HPS-4276	1	
Heat Shield	3	531-449	1	
Heat Shield Bracket #1	4	530-500	1	
Heat Shield Bracket #2	4	530-501	1	
MAF Adapter for Heat Shield	4	ADP-TACO-95	1	
Throttle Body Silicone Reducer 2.75" to 3"	4	P3SR-275-300	1	
3" - 3.25" Silicone Reducer	4	P3SR-300-325	1	
T-Bolt Clamp for 2.75" Throttle Body	4	SSTC-73-81	1	
T-Bolt Clamp for 3" Intake Pipe	4	SSTC-79-87	2	
T-Bolt Clamp for 3.25" MAF Sensor	4	SSTC-86-94	1	
Embossed Worm Gear Clamp for 16mm Vacuum Hose	4	EMSC-12-22	2	
8mm Vacuum Hose for Accessory Vacuum Dependent on Model, 27" long	4	HTSVH8	1	
16mm Vacuum Hose for IACV Sensor to Intake Pipe, 2.5" long	4	HTSVH159	1	
6mm Vacuum Hose for Accessory Vacuum Hose to FPR Dependent on Model, 25" long	4	HTSVH6	1	
M6 Bolt 12mm Length	4	HW-B6-12	2	
M6 Bolt 30mm Length	4	HW-B6-30	4	
M6 Nut	4	HW-N6	3	
M8 Bolt 16mm Long	4	HW-B8-16	1	
M6 Washer 16mm Outer Diameter	4	HW-FW6L	9	
M6 Vibration Mount 1/2" Tall	4	HW-RM6-50	1	
3/8" Rubber Grommet for IAT Sensor	4	HW-RG10	1	
1/4" Vacuum Cap	4	HW-VC-025	1	
3/8" Vacuum Cap	4	HW-VC-038	1	
5/8" 90 Degree Male to Male Barb	4	HW-BF90-062	1	
1/8" to 1/4" Male to Male Reducer Barb	4	91355K31	1	
1/4" Male to Male Barb	4	91355K82	1	
1/4" to 3/8" Male to Male Reducer Barb	4	91355K32	1	

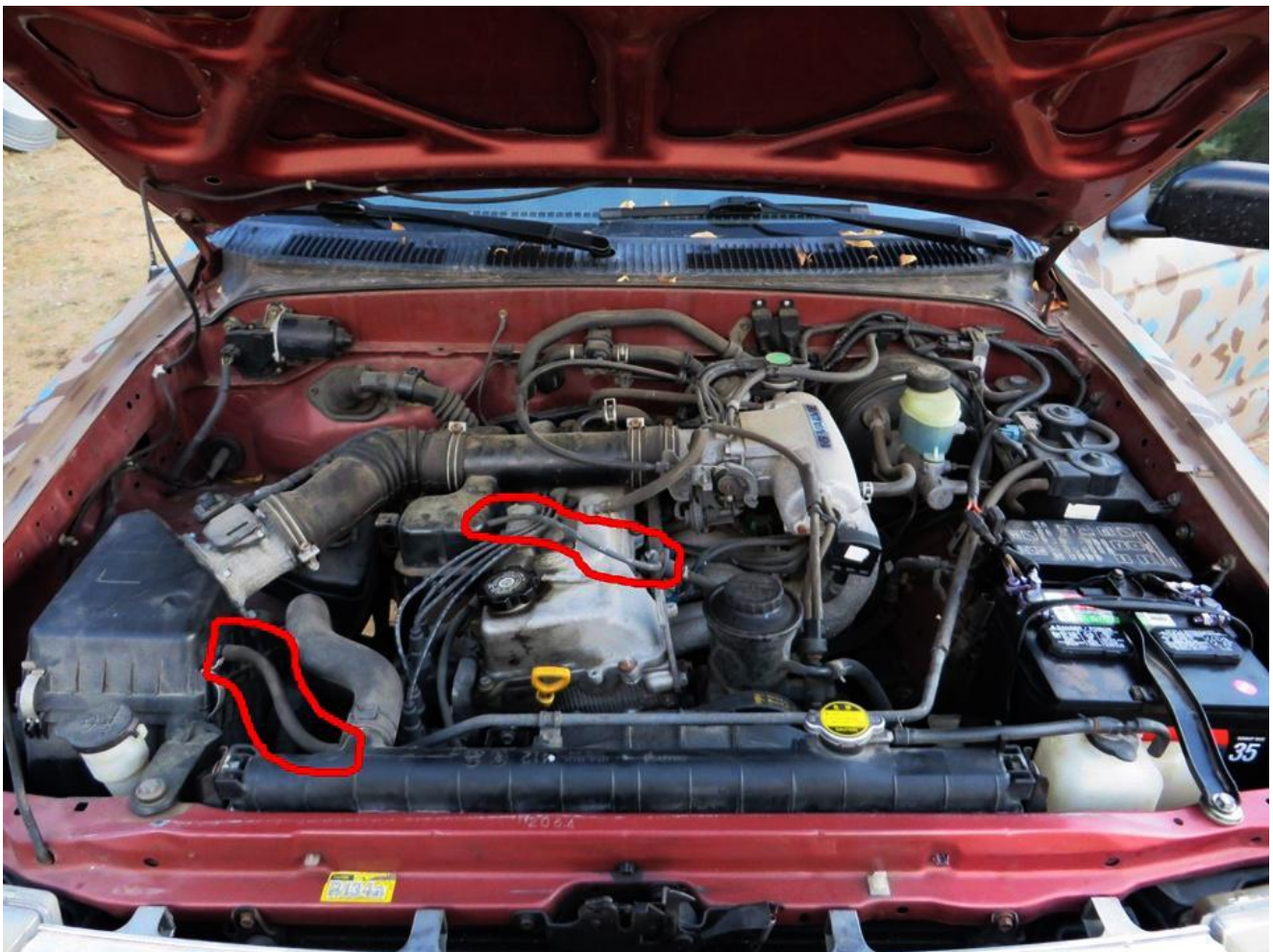
- **Before installing any parts of this intake system, please read the instructions thoroughly.**
- **Verify the contents of this intake kit before disassembling your vehicle.**
- **DO NOT INSTALL IF ANY PARTS ARE MISSING OR DAMAGED. CONTACT tech@hpsperformanceproducts.com IMMEDIATELY. WE ARE NOT RESPONSIBLE FOR ANY DAMAGE CAUSED DUE TO IMPROPER INSTALLATION.**
- **Installation requires moderate mechanical skills. A qualified mechanic is highly recommended.**
- **Do not attempt to install the intake system while the engine is hot.**
- **This installation may require removal of coolant lines that may be hot.**
- **For technical inquiries, please e-mail us at tech@hpsperformanceproducts.com**

PLEASE READ CAREFULLY BEFORE INSTALLATION!

This installation is not for the novice customer. Install this product with EXTREME caution! Misuse of this product can destroy your engine! If you are not mechanically inclined, please have a professional automotive mechanic install this kit.

NOTE: HPS holds no responsibility for any engine damage that results from misuse of this product.

Before removing anything from the engine bay, determine which vacuum lines are going to be used. Below you will see 2 vacuum lines outlined through the engine bay, one of those lines routes from the intake to the fuel pressure regulator. The second line is the charcoal canister line for evap. The truck we developed this kit on uses a vacuum line from the intake manifold to the intake as a throttle body bypass instead (shown in step 5). Our vehicle does not have the charcoal canister or fuel pressure regulator vacuum hoses. Regardless of which, we have included all of the necessary hardware to support either variation of the truck.



GETTING STARTED

1. Turn the ignition OFF and disconnect the vehicle's negative battery cable. If the engine has run within the past two hours let it cool down.

NOTE: Disconnecting the negative battery cable erases pre-programmed electronic memories. Write down all memory settings before disconnecting the negative battery cable. Some radios will require an anti-theft code to be entered after the battery is reconnected. The anti-theft code is typically supplied with your owner's manual. In the event your vehicles' anti-theft code cannot be recovered, contact an authorized dealership to obtain your vehicle's anti-theft code. We also highly recommend NOT discarding any stock parts after the installation.



2. Loosen OEM hose clamps on each end of the intake hose.



3. Unplug MAF sensor.



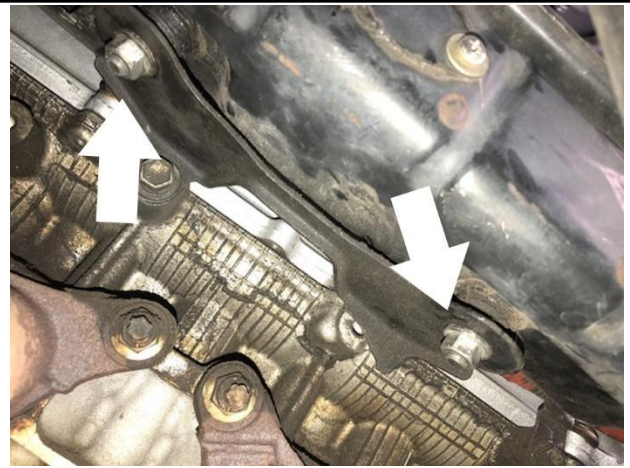
4. Remove the intake air temp sensor from the stock air box. Twist and pull with light pressure.



5. Remove the factory IACV hose(right) and the throttle body bypass hose(left) from the intake pipe.



6 Loosen and remove the intake pipe from the throttle body. (pictured on the left side of this photo is the air resonator box, there are two nuts underneath it securing it to the engine.



7. Remove the two 12mm nuts securing the air resonator box to the engine.



8. Install 2.75" to 3" HPS coupler with the supplied T-Bolt clamps to the throttle body.



9. Remove the factory air box from the engine bay by removing the bolts shown above.



10. Using a 10mm wrench or socket, remove the MAF sensor and rubber gasket. Make sure to keep the factory m6 nuts as we're going to reuse them along with the rubber gasket.



11. Gather the heat shield, MAF adapter, rubber gasket, factory m6 nuts and HPS supplied m6 30mm long bolts.



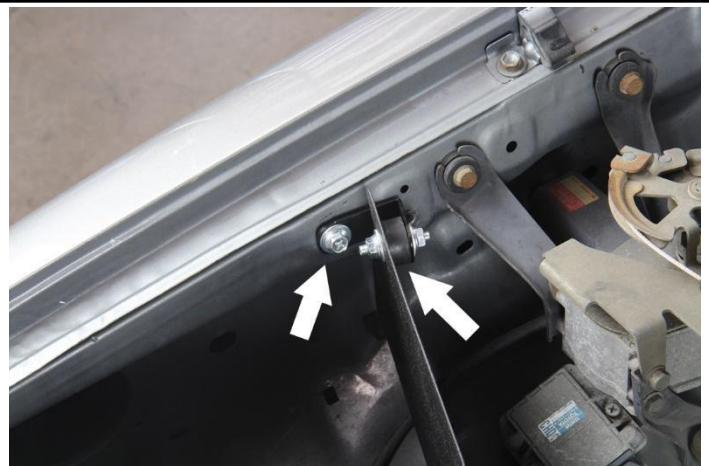
12. Mount the MAF with the rubber gasket on the back side of the heat shield with the MAF adapter on the front side of the heat shield.



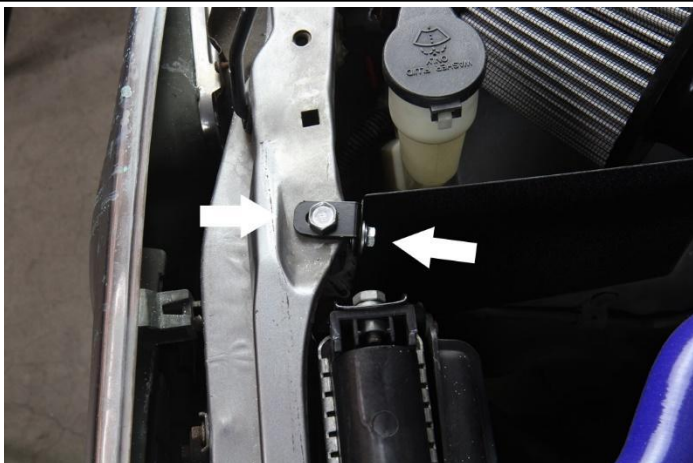
13. Mount the HPS air filter onto the MAF adapter on the front side of the heat shield.



14. Slide the heat shield into the original air box section of the engine bay.



15. Using the supplied hardware and bracket, mount the heat shield to the chassis. This bracket is going to have two m6 slots.



16. Using the second bracket that utilizes an m6 slot on one side and an m8 slot on the other side, mount the m8 slot to the chassis using the HPS supplied m8 bolt. Now mount the m6 slot side of the bracket to the corresponding hole on the heat shield.



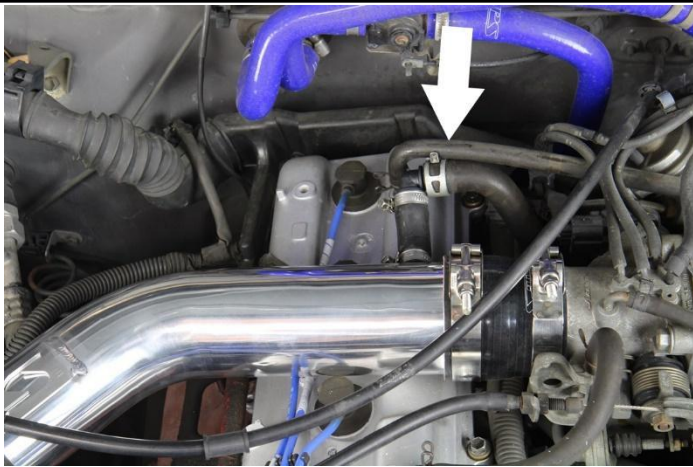
17. Reconnect the MAF sensor.



18. Install the 3/8" rubber grommet in the open intake hole. Install the 16mm vacuum hose onto the barb pictured with the 90 degree male to male barb facing parallel with the intake pipe and secure them together with the HPS provided clamps.



19. Tighten all intake hose clamps and anything else that may not be tight yet.



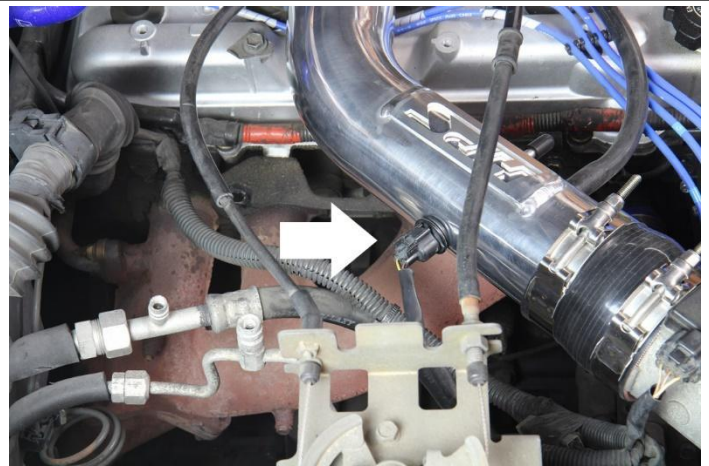
20. Install the IACV vacuum hose to the HPS supplied 90 degree barb.



21. Install HPS supplied new vacuum hose onto the intake manifold barb circled.



22. Install the other end of the vacuum hose onto the intake pipe.



23. Insert intake air temp sensor into the 3/8" rubber grommet. (apply light pressure and twist)



Final Steps

Once the intake has been positioned, tighten all of the clamps and secure all of the parts.

Upon completion of the installation, reconnect the negative battery terminal before you start the engine. Double check to make sure everything is tight and properly positioned before starting the vehicle.

Start the engine. Let the car idle for 3 minutes. Perform a final inspection before driving. Listen carefully for any odd noises, rattles and/or air leaks prior to taking it for a test drive. If any problems arise go back and check the vacuum lines, hoses and clamps that may be causing leaks or rattles and correct the problem.

Periodically, recheck the alignment of the intake system and make sure there is proper clearance around and along the length of the intake. Failure to follow proper maintenance procedures may cause damage to the intake and will void the warranty.