



Performance Shortram Air Intake Kit

Part Number: 827-613

2016 Scion iA 1.5L
2017 - 2018 Toyota Yaris iA 1.5L
2019-2020 Toyota Yaris Sedan 1.5L

Installation Instructions

For technical inquiries please email us at tech@hpsperformanceproducts.com

In the email, please include the following information for faster response:

- Year / Make / Model / Engine of your vehicle.
- If it is a fitment issue, please include pictures showing the fitment problem.
- If there are missing parts, please list the part number(s) from the bill of materials on the 2nd page.
- Optional but recommended – Your contact phone number and preferred call back time.

You can also give us a call via 626-747-9200 for tech support Monday-Friday, 9:00am-5:00pm Pacific Time.

Bill of Materials

Kit Number: 827-613

Description	Prep	Part Number	Qty	Check
Air Intake Pipe	1	529-371	1	
HPS Air Filter	2	HPS-4295	1	
Bracket for Heat Shield	3	530-373	1	
Heat Shield for IA	4	531-372	1	
Breather Hose, 7/16", 18" long	5	EPDM-043	1	
T-Bolt Clamp for Throttle Body	5	SSTC-63-71	1	
T-Bolt Clamp for Air Intake Pipe	5	SSTC-67-75	1	
238-250 Silicone Reducer x 3" Long	5	HTSR-238-250	1	
Clamp for Breather Hose	5	EMSC-12-22	1	
M4 bolts	5	HW-B4-10	2	
6MM Bolt 16MM long	5	HW-B6-16	1	
6MM Flange Nut	5	HW-N6	2	
6MM Flat Washer 16MM OD	5	HW-FW6L	2	
Thin Edge Trim, 11" Long	5	THIN EDGE TRIM	1	
Edge Trim with Bulb, 17" Long	5	BUBBLE EDGE TRIM	1	
Edge Trim with Bulb, 12.5" Long	5	BUBBLE EDGE TRIM	1	

- Before installing any parts of this intake system, please read the instructions thoroughly.
- Verify the contents of this intake kit before disassembling your vehicle.
- DO NOT INSTALL IF ANY PARTS ARE MISSING OR DAMAGED. CONTACT tech@hpsperformanceproducts.com IMMEDIATELY. WE ARE NOT RESPONSIBLE FOR ANY DAMAGE CAUSED DUE TO IMPROPER INSTALLATION.
- Installation requires moderate mechanical skills. A qualified mechanic is highly recommended.
- Do not attempt to install the intake system while the engine is hot.
- This installation may require removal of coolant lines that may be hot.
- For technical inquiries, please e-mail us at tech@hpsperformanceproducts.com

PLEASE READ CAREFULLY BEFORE INSTALLATION!

This installation is not for the novice customer. Install this product with EXTREME caution! Misuse of this product can destroy your engine! If you are not mechanically inclined, please have a professional automotive mechanic install this kit.

NOTE: HPS holds no responsibility for any engine damage that results from misuse of this product.

GETTING STARTED

1. Turn the ignition OFF and disconnect the vehicle's negative battery cable. If the engine has run within the past two hours let it cool down.

NOTE: Disconnecting the negative battery cable erases pre-programmed electronic memories. Write down all memory settings before disconnecting the negative battery cable. Some radios will require an anti-theft code to be entered after the battery is reconnected. The anti-theft code is typically supplied with your owner's manual. In the event your vehicles' anti-theft code cannot be recovered, contact an authorized dealership to obtain your vehicles anti-theft code. We also highly recommend NOT discarding any stock parts after the installation.



2. Remove the engine cover by lightly pulling upward on it and it will pop out.



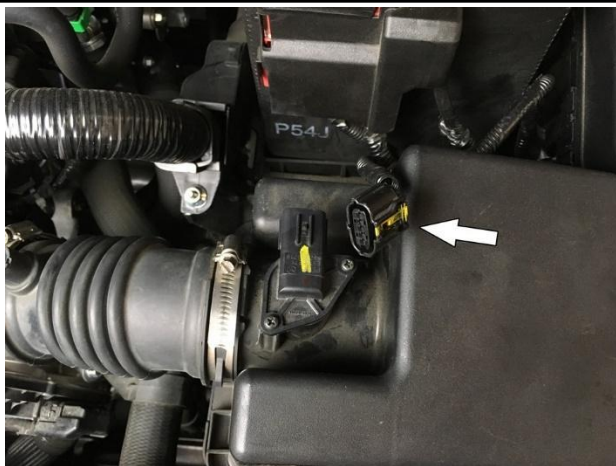
3. Unlatch the air box at the 2 mounting points pictured.



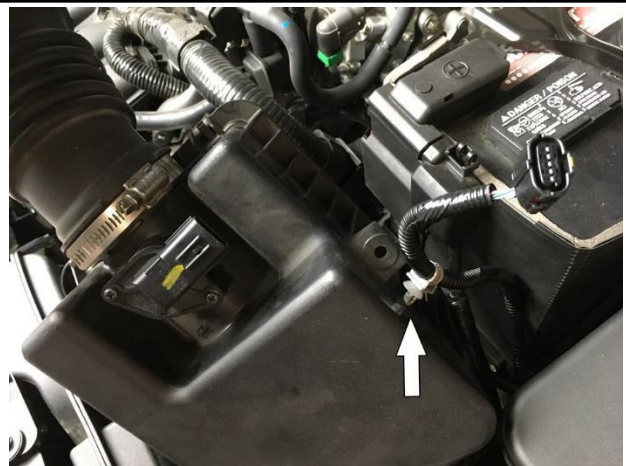
4. Remove the breather barb from the intake tube.



5. Loosen the clamp on the intake tube, then remove it from the throttle body.



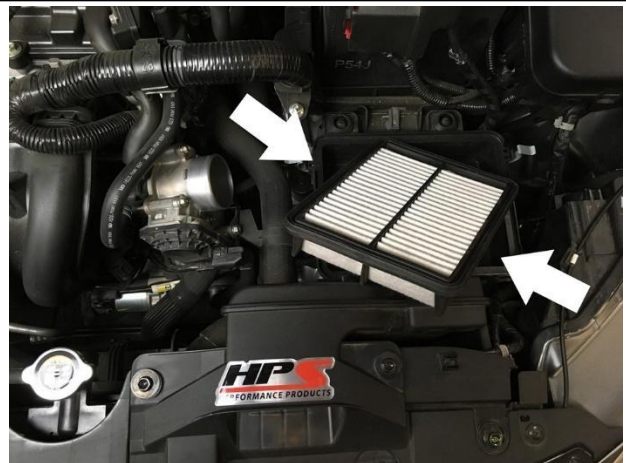
6. Unplug the MAF sensor.



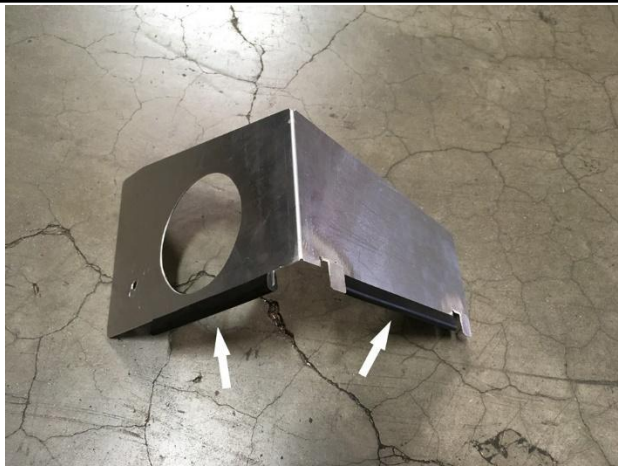
7. Remove the MAF sensor wiring harness clip from the airbox.



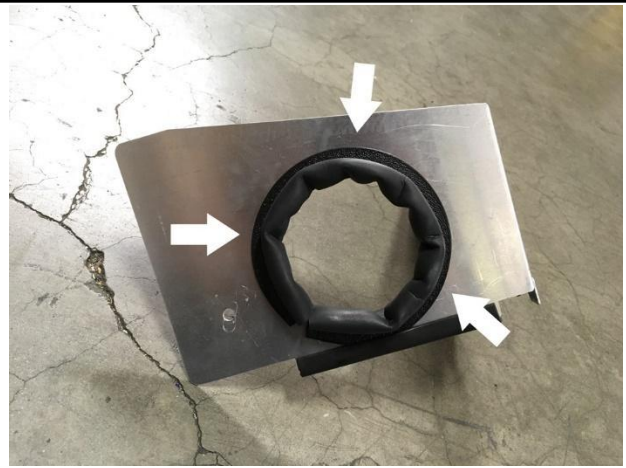
8. Remove the upper airbox from the lower airbox by lifting up on the back side of the airbox and sliding it toward the rear of the car.



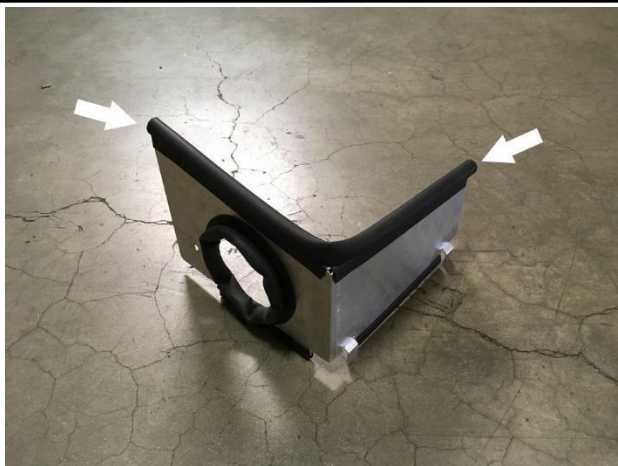
9. Remove the OEM air filter from the lower airbox.



10. Insert the thin edge trip along the bottom of the heat shield.



11. Insert the bubble edge trim along the hole of the heatshield.



12. Insert the remaining bubble edge trim along the top of the heat shield



13. Install the provided mounting bracket onto the heatshield with the M6 hardware. Do not fully tighten yet as bracket angle will be found once the heatshield is installed into the car.



14. Remove the nut circled in the picture above.



15. Slide the 2 tabs on the heat shield into the OEM location for the upper air box. Rotate the bracket at the rear so that it fits onto the chassis stud.



16. Reinstall the nut and tighten all the way. Now you can tighten the nut and bolt for the bracket on the heat shield.



17. Install the coupler onto the throttle body and tighten the clamp circled in the picture.



18. Remove the 2 screws holding the MAF sensor onto the factory airbox.



19. Using the provided M4 bolts to mount the MAF sensor to the new shortram intake along with the air filter.



20. Insert the new shortram intake through the heatshield as pictured above.



21. Tighten down the clamp circled in the picture above.



22. Install the provided EPDM hose onto the valve cover breather port.



23. Install EPDM hose onto the intake with the provided hose clamp and tighten.



24. Reinstall the engine cover.

Final Steps

Once the intake has been positioned, tighten all of the clamps and secure all of the parts.

Upon completion of the installation, reconnect the negative battery terminal before you start the engine. Double check to make sure everything is tight and properly positioned before starting the vehicle.

Start the engine. Let the car idle for 3 minutes. Perform a final inspection before driving vehicle. Listen carefully for any odd noises, rattles and/or air leaks prior to taking it for a test drive. If any problems arise go back and check the vacuum lines, hoses and clamps that may be causing leaks or rattles and correct the problem.

Periodically, recheck the alignment of the intake system and make sure there is proper clearance around and along the length of the intake. Failure to follow proper maintenance procedures may cause damage to the intake and will void the warranty.



