



Performance Shortram Air Intake Kit Part Number: 827-561

Ford 2011-2014 Mustang 3.7L V6

Installation Instructions

For technical inquiries please email us at tech@hpsperformanceproducts.com

In the email, please include the following information for faster response:

- Year / Make / Model / Engine of your vehicle.
- If it is a fitment issue, please include pictures showing the fitment problem.
- If there are missing parts, please list the part number(s) from the bill of materials on the 2nd page.
- Optional but recommended – Your contact phone number and preferred call back time.

You can also give us a call via 626-747-9200 for tech support Monday-Friday, 9:00am-5:00pm Pacific Time.

Bill of Materials

Kit Number: 827-561

Description	Prep	Part Number	Qty	Check
Air Intake Pipe	1	529-259	1	
HPS Air Filter	2	HPS-4303	1	
Heat Shield	3	531-260	1	
Velocity Stack 3.50" - 6.00"	4	HW-VS-350-600	1	
T-Bolt Clamp for 3" Hose	5	SSTC-79-87	1	
T-Bolt Clamp for 3.5" Hose	5	SSTC-89-97	3	
3" - 3.5" Reducer x 3" Long	5	P3SR-300-350-L3	1	
3.5" Coupler x 2" Long	5	P3SC-350-L2	1	
6mm Flange Washer 16mm OD	5	HW-FW6L	2	
6mm Flange Nut	5	HW-N6	1	
MAF Sleeve 3.5" pipe	5	HW-VEN-350-325	1	
3/8" Rubber Grommet	5	HW-RG10	1	
3/8" Barb Fitting	5	HW-BF-038	1	
8mm Allen Bolt x 8mm Long	5	HW-B4-8	2	

- Before installing any parts of this intake system, please read the instructions thoroughly.
- Verify the contents of this intake kit before disassembling your vehicle.
- DO NOT INSTALL IF ANY PARTS ARE MISSING OR DAMAGED. CONTACT tech@hpsperformanceproducts.com IMMEDIATELY. WE ARE NOT RESPONSIBLE FOR ANY DAMAGE CAUSED DUE TO IMPROPER INSTALLATION.
- Installation requires moderate mechanical skills. A qualified mechanic is highly recommended.
- Do not attempt to install the intake system while the engine is hot.
- This installation may require removal of coolant lines that may be hot.
- For technical inquiries, please e-mail us at tech@hpsperformanceproducts.com

PLEASE READ CAREFULLY BEFORE INSTALLATION!

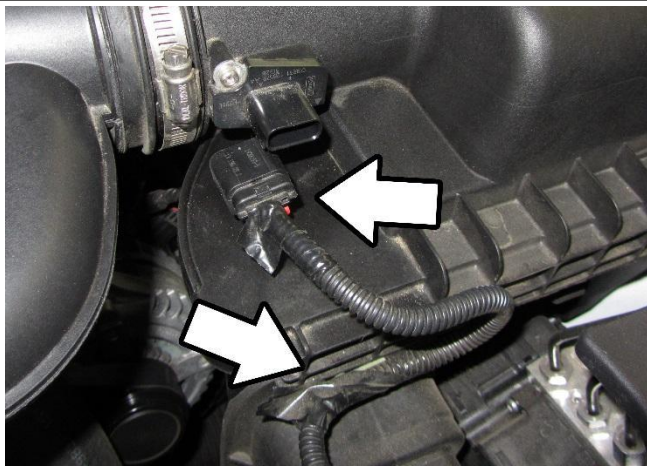
This installation is not for the novice customer. Install this product with EXTREME caution! Misuse of this product can destroy your engine! If you are not mechanically inclined, please have a professional automotive mechanic install this kit.

NOTE: HPS holds no responsibility for any engine damage that results from misuse of this product.

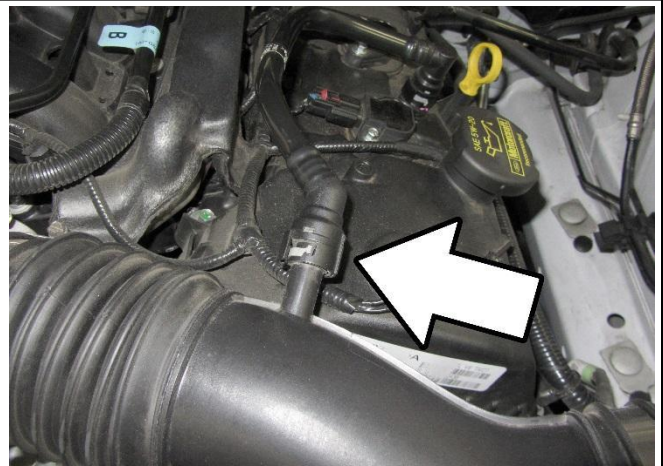
GETTING STARTED

1. Turn the ignition OFF and disconnect the vehicle's negative battery cable. If the engine has run within the past two hours let it cool down.

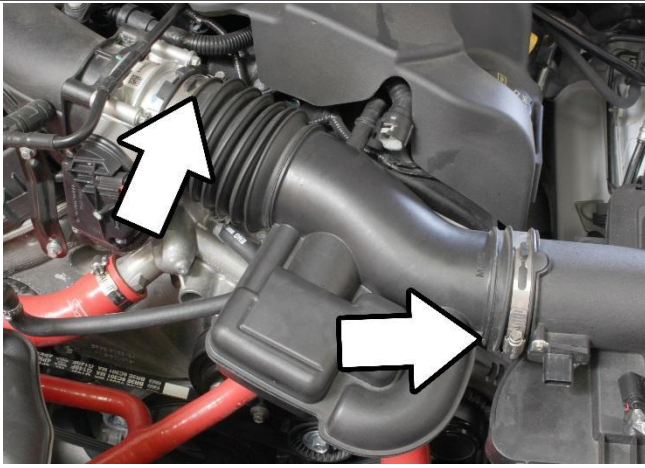
NOTE: Disconnecting the negative battery cable erases pre-programmed electronic memories. Write down all memory settings before disconnecting the negative battery cable. Some radios will require an anti-theft code to be entered after the battery is reconnected. The anti-theft code is typically supplied with your owner's manual. In the event your vehicles' anti-theft code cannot be recovered, contact an authorized dealership to obtain your vehicle's anti-theft code. We also highly recommend NOT discarding any stock parts after the installation.



2. Disconnect Mass Air Flow harness from the sensor and unclip harness from air box.



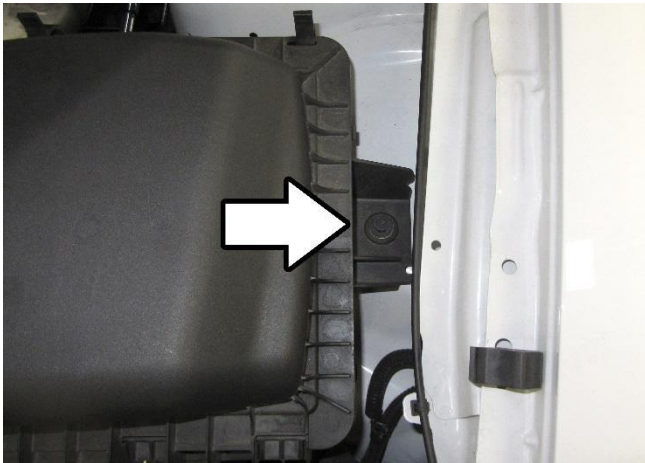
3. Unclip the breather hose from the factory intake tube.



4. Loosen the clamps from the throttle body and the air box.



5. Remove the factory air tube from the vehicle.



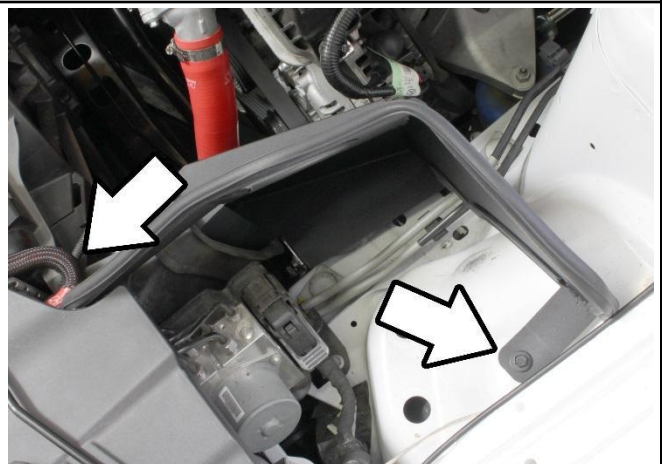
6. Unbolt the one bolt holding the air box to the chassis.



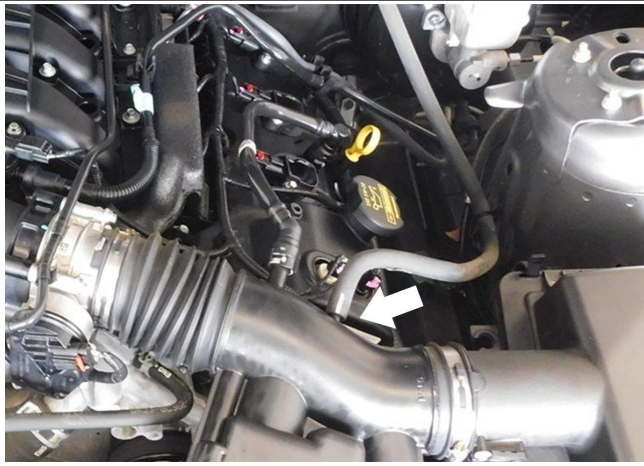
7. Remove the airbox from the engine bay.



8. Install the silicone coupler onto the throttle body along with the two T-bolt clamps.

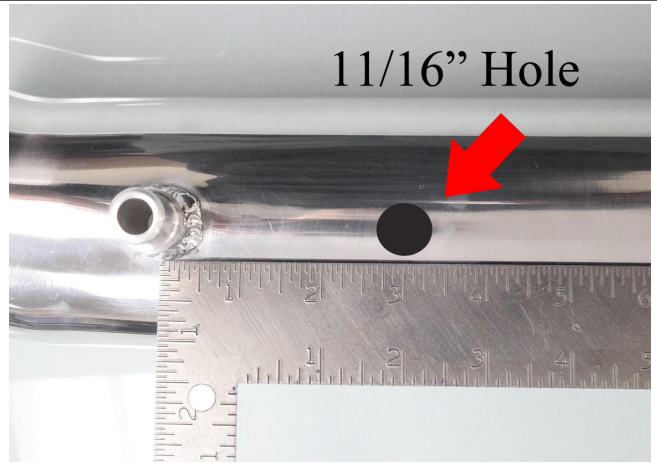


9. Insert and secure the heat shield by re-using the bolt from the airbox on the side, and a 6mm nut and washer to secure it on the fan shroud.



SPECIAL INSTRUCTIONS FOR MUSTANG V6 WITH 2 HOSE CONNECTION ON STOCK INTAKE HOSE.

If your stock intake hose has two hoses attached to it, a hole will need to be drilled in order to create a provision to attach the additional hose.



SPECIAL INSTRUCTIONS FOR MUSTANG V6 WITH 2 HOSE CONNECTION ON STOCK INTAKE HOSE.

Drill a 11/16" hole 3" away from the quick connect fitting. Be sure to clean off any debris once the hole has been made. Install the provided rubber grommet and barb fitting .



10. Insert the HPS intake pipe into the coupler. Attach the quick connect hose onto the fitting.



11. Install the MAF sleeve into the HPS intake.



12. Install and secure the sensor from the factory air box to the intake using the provided M4 allen bolts.



13. Install the velocity stack into the HPS air filter.



14. Insert the remaining coupler onto the HPS filter along with the two t-bolt clamps.



15. Install the air filter onto the intake pipe and reconnect the MAF sensor harness to the MAF sensor.

Final Steps

Once the intake has been positioned, tighten all of the clamps and secure all of the parts.

Upon completion of the installation, reconnect the negative battery terminal before you start the engine. Double check to make sure everything is tight and properly positioned before starting the vehicle.

Start the engine. Let the car idle for 3 minutes. Perform a final inspection before driving. Listen carefully for any odd noises, rattles and/or air leaks prior to taking it for a test drive. If any problems arise go back and check the vacuum lines, hoses and clamps that may be causing leaks or rattles and correct the problem.

Periodically, recheck the alignment of the intake system and make sure there is proper clearance around and along the length of the intake. Failure to follow proper maintenance procedures may cause damage to the intake and will void the warranty.



**HPS Silicone Radiator Hose Kit (Black/Blue/Red) with Stainless Steel Clamps
is now available for Ford 2011-2014 Mustang 3.7L V6!**



Part Number: 57-1330 - MSRP: \$250

**Contact an authorized HPS Performance Products dealer or visit us at
www.hpsperformanceproducts.com for more details**