



Performance Shortram Air Intake Kit Part Number: 827-538

Hyundai 2011-2016 Elantra 1.8L 4cyl

Installation Instructions

For technical inquiries please email us at tech@hpsperformanceproducts.com

In the email, please include the following information for faster response:

- Year / Make / Model / Engine of your vehicle.
- If it is a fitment issue, please include pictures showing the fitment problem.
- If there are missing parts, please list the part number(s) from the bill of materials on the 2nd page.
- Optional but recommended – Your contact phone number and preferred call back time.

You can also give us a call via 626-747-9200 for tech support Monday-Friday, 9:00am-5:00pm Pacific Time.

Bill of Materials

Kit Number: 827-538

Description	Prep	Part Number	Qty	Check
Air Intake Pipe	#1	529-192	1	
HPS Air Filter		HPS-4276	1	
Heat Shield	#2	531-193	1	
T-Bolt Clamp for 2.75" Hose	#3	SSTC-73-81	1	
T-Bolt Clamp for 3" Hose	#3	SSTC-79-87	1	
2.75" – 3" Reducer x 2.5" Long	#3	P3SR-275-300-L25	1	
Intake Bracket	#3	530-121	1	
6mm Flange 12mm Long	#3	HW-B6-12	2	
6mm Flange nut	#3	HW-N6	2	
6mm Flat Washer OD	#3	HW-FW6L	4	
8mm Lange Nut	#3	HW-N8	1	
8mm Washer 25mm OD	#3	HW-FW8L	2	
6mm Rubber Mount, 1" Length	#3	HW-RM6-100	1	
8mm Rubber Mount, 1" Length	#3	HW-RM8-100	1	

- Before installing any parts of this intake system, please read the instructions thoroughly.
- Verify the contents of this intake kit before disassembling your vehicle.
- **DO NOT INSTALL IF ANY PARTS ARE MISSING OR DAMAGED. CONTACT tech@hpsperformanceproducts.com IMMEDIATELY. WE ARE NOT RESPONSIBLE FOR ANY DAMAGE CAUSED DUE TO IMPROPER INSTALLATION.**
- Installation requires moderate mechanical skills. A qualified mechanic is highly recommended.
- Do not attempt to install the intake system while the engine is hot.
- This installation may require removal of coolant lines that may be hot.
- For technical inquiries, please e-mail us at tech@hpsperformanceproducts.com

PLEASE READ CAREFULLY BEFORE INSTALLATION!

This installation is not for the novice customer. Install this product with EXTREME caution! Misuse of this product can destroy your engine! If you are not mechanically inclined, please have a professional automotive mechanic install this kit.

NOTE: HPS holds no responsibility for any engine damage that results from misuse of this product.

GETTING STARTED

1. You must turn the ignition OFF and disconnect the vehicle's negative battery cable. If the engine has run within the past two hours let it cool down.

NOTE: Disconnecting the negative battery cable erases pre-programmed electronic memories. Write down all memory settings before disconnecting the negative battery cable. Some radios will require an anti-theft code to be entered after the battery is reconnected. The anti-theft code is typically supplied with your owner's manual. In the event your vehicles' anti-theft code cannot be recovered, contact an authorized dealership to obtain your vehicle's anti-theft code. We also highly recommend NOT discarding any stock parts after the installation.



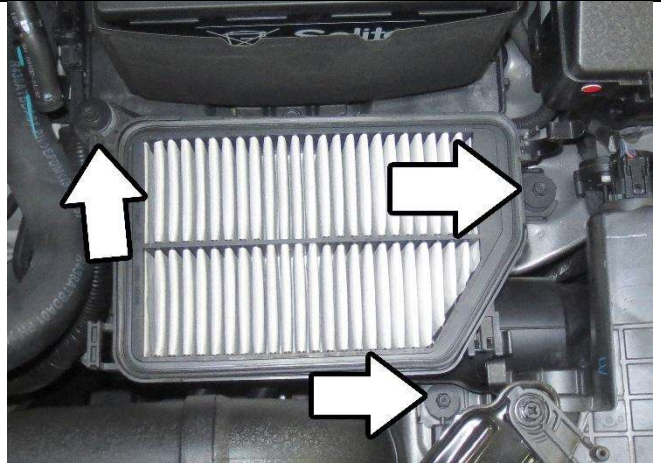
2. Using a pair of pliers, loosen and remove the breather hose from the factory intake hose.



3. Loosen the hose clamp on the throttle body.



4. Unclip the two latches holding the upper part of the air box and remove the top portion of the intake assembly.



5. Remove the three bolts holding the air box in place.



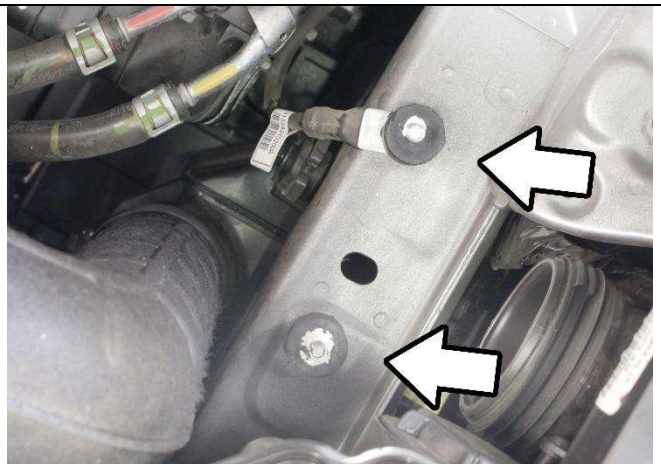
6. Remove the air box from the vehicle.



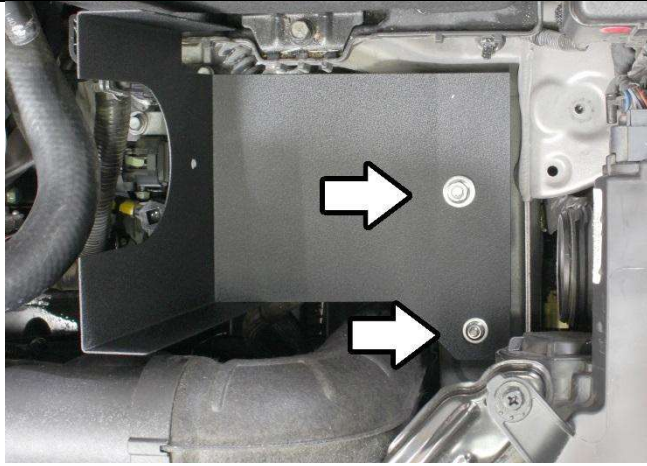
7. Install the silicone coupler onto the throttle body along with the two T-bolt clamps.



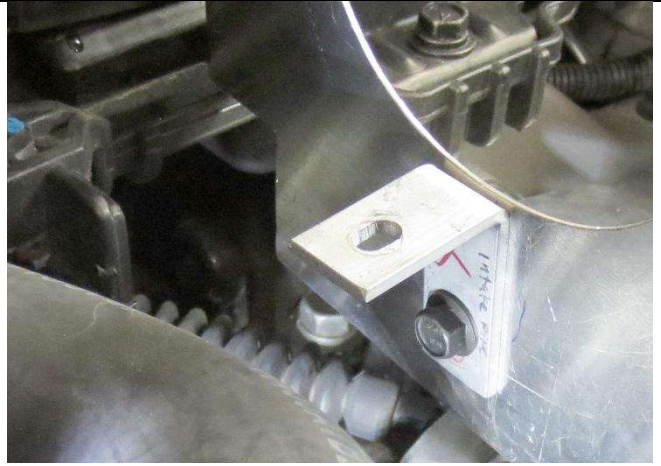
8. Remove the bolt from the ground wire located as shown.



9. Install a washer and rubber mount to secure the ground wire, then install the other rubber mount as shown.



10. Install the heat shield onto the rubber mounts and secure it with the nuts and washers provided in the hardware kit.



13. Install the intake bracket onto the heat shield using a 12mm bolt, nut, and washer.



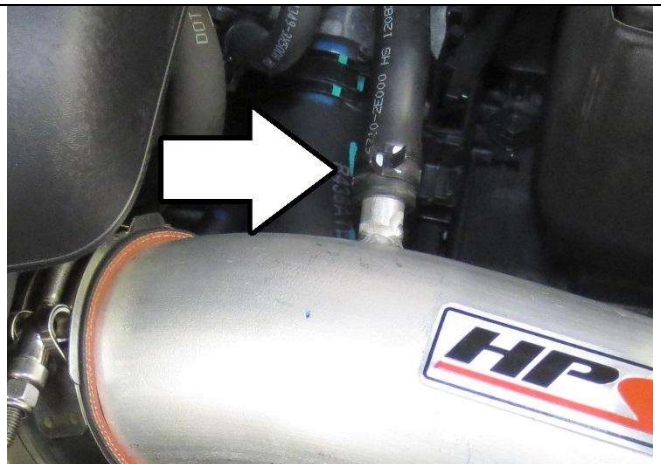
14. Install the HPS air filter onto the HPS intake pipe.



15. Install the intake pipe onto the throttle body coupler.



16. Bolt the intake to the intake bracket using the remaining 6mm bolt and washer.



17. Re-insert the stock breather hose onto the intake pipe.

Final Steps

Once the intake has been positioned, tighten all of the clamps and secure all of the parts.

Upon completion of the installation, reconnect the negative battery terminal before you start the engine. Double check to make sure everything is tight and properly positioned before starting the vehicle.

Start the engine. Let the car idle for 3 minutes. Perform a final inspection before driving. Listen carefully for any odd noises, rattles and/or air leaks prior to taking it for a test drive. If any problems arise go back and check the vacuum lines, hoses and clamps that may be causing leaks or rattles and correct the problem.

Periodically, recheck the alignment of the intake system and make sure there is proper clearance around and along the length of the intake. Failure to follow proper maintenance procedures may cause damage to the intake and will void the warranty.

